

LEE COUNTY SURVEY MARK DESCRIPTION

DESIGNATION 311 COUNTY LEE STATE FLORIDA
 LOCATED IN SEC 2 TWP 46S RGE 22E USGS QUAD MAP SANIBEL

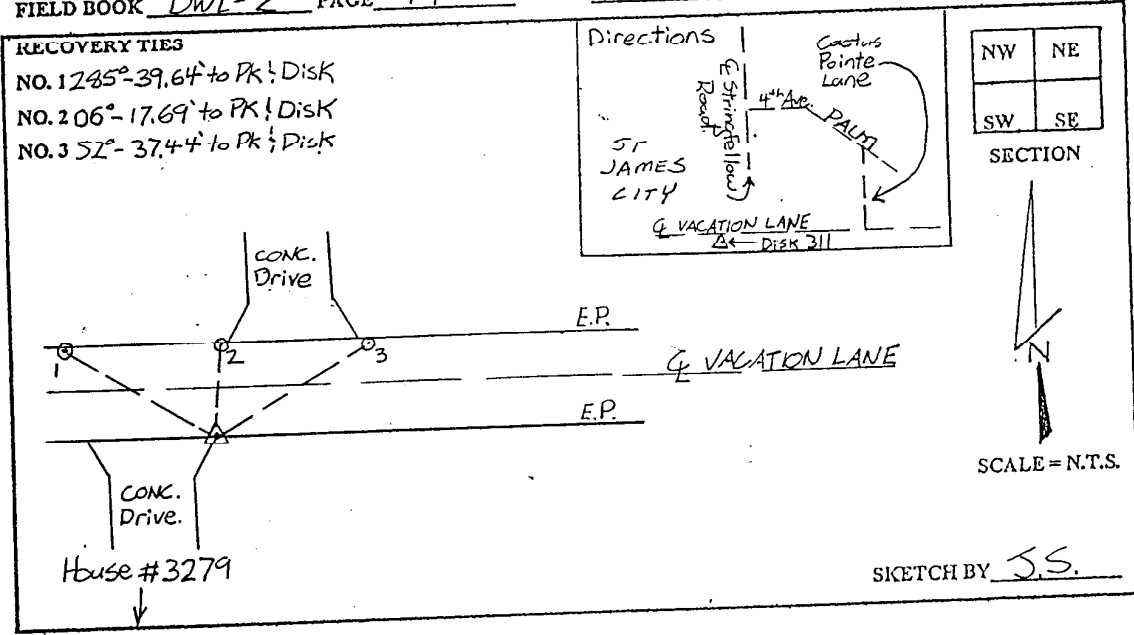
TO REACH SURVEY MARK:
 FROM PINE ISLAND CENTER; RUN SOUTH ON STRINGFELLOW ROAD 7.6 mi. ±
 TO 4th AVE., THENCE RUN EAST ALONG 4th AVE. TO PALM CT., THENCE RUN
 SOUTHEAST ALONG PALM CT. TO CACTUS POINTE LANE, THENCE RUN SOUTH
 ALONG CACTUS POINTE LANE TO VACATION LANE, THENCE RUN WEST ALONG
 VACATION LANE TO HOUSE #3279.

TYPE OF SFT 3" LEE COUNTY PUBLIC WORKS ALUM. DISK AT CORNER
 MARK OF CONCRETE DRIVE AND E.O.P. DATE SET APRIL 24 1998

HORIZONTAL CONTROL ORIGINATED ON 2/17/98 ORDER CONTROL BY _____
 ON 1927 DATUM. ON 1983 (1990 GPS ADJUSTMENT) DATUM.

COORDINATES (FT.) ORDER _____ COORDINATES (FT.) ORDER _____
 NORTHING (Y) _____ NORTHING (Y) 784452.35
 EASTING (X) _____ EASTING (X) 630557.31

GRID FLORIDA TRANSVERSE MERCATOR RECOVERED BY _____
 ZONE WEST DATE CONDITION _____
 FIELD BOOK BWL#2 PAGE 14



JOHNSON ENGINEERING, INC.

CIVIL ENGINEERS - LAND SURVEYORS

2158 JOHNSON STREET, POST OFFICE BOX 1550, FORT MYERS, FLORIDA, 33902-1550

PHONE: 941-334-0046