

LEE COUNTY SURVEY MARK DESCRIPTION

DESIGNATION 2284 COUNTY LEE STATE FLORIDA
 LOCATED IN SEC 17 TWP 44S RGE 22E USGS QUAD MAP BOKEELIA

TO REACH SURVEY MARK:

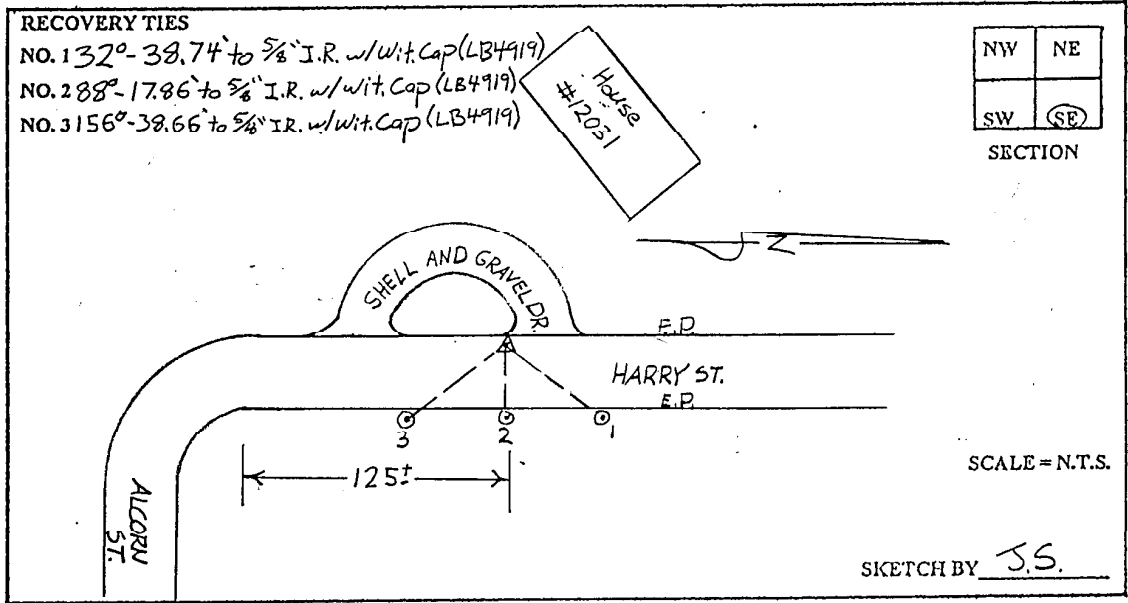
FROM PINE ISLAND CENTER, RUN NORTH ALONG STRINGFELLOW ROAD 1.6 mi. ± TO ALCORN ST., THENCE RUN WEST ALONG ALCORN ST. 0.2 mi. ± TO HARRY ST., THENCE RUN NORTH ALONG HARRY ST. 150' ± TO MARK.

TYPE OF SET 3" LEE COUNTY PUBLIC WORKS ALUM. DISK IN PAVEMENT
 MARK _____ DATE SET APRIL 20 19 98

HORIZONTAL CONTROL ORIGINATED ON 2ND 1ST ORDER CONTROL BY _____
 ON 1927 DATUM. ON 1983 (1990 GPS ADJUSTMENT) DATUM.

COORDINATES (FT.) ~~340~~ ORDER _____ COORDINATES (FT.) ~~340~~ ORDER _____
 NORTHING (Y) _____ NORTHING (Y) 836925.75
 EASTING (X) _____ EASTING (X) 613972.80

GRID FLORIDA TRANSVERSE MERCATOR RECOVERED BY _____
 ZONE WEST DATE CONDITION _____
 FIELD BOOK BWL#2 PAGE 10



JOHNSON ENGINEERING, INC.

CIVIL ENGINEERS - LAND SURVEYORS

2158 JOHNSON STREET, POST OFFICE BOX 1550, FORT MYERS, FLORIDA, 33902-1550

PHONE: 941-334-0046