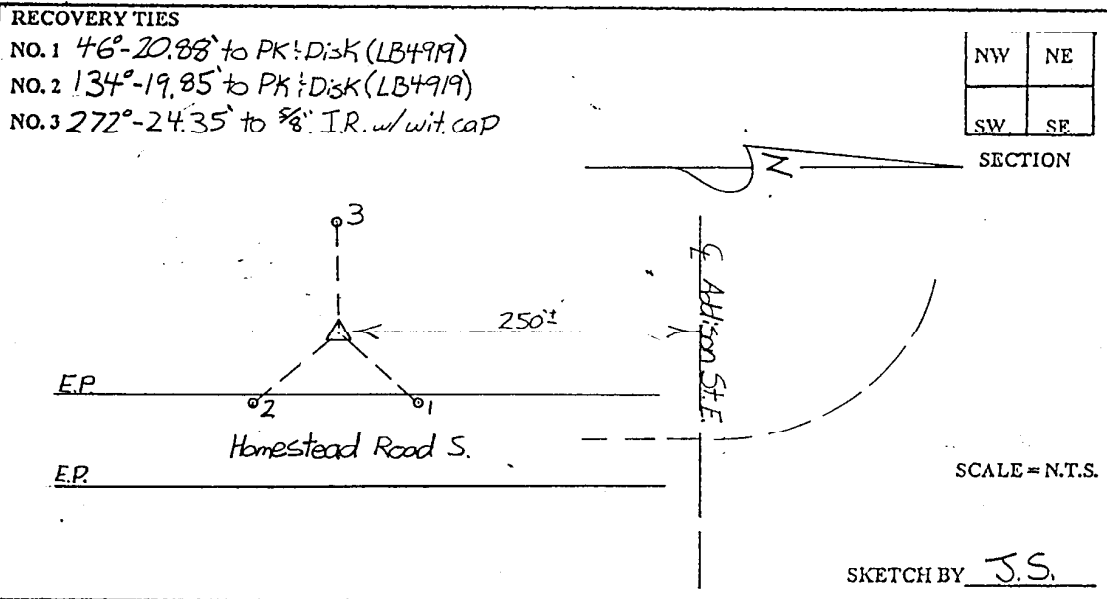


LEE COUNTY  
SURVEY MARK DESCRIPTION

DESIGNATION 2053 COUNTY LEE STATE FLORIDA  
LOCATED IN SEC 21 TWP 45S RGE 27E USGS QUAD MAP ALVA SE

TO REACH SURVEY MARK:  
FROM S.R. -82; RUN NORTHERLY ALONG HOMESTEAD ROAD S. 1.7 mi. ±  
TO ADDISON ST. E. DISK "2053" IS LOCATED 250' ± S. OF ADDISON ST. E.  
WEST OF HOMESTEAD ROADS.

TYPE OF SFT 6" ROUND CONCRETE MONUMENT W/ 3" LEE COUNTY  
MARK PUBLIC WORKS ALUM. DISK DATE SET JUNE 22 1998  
HORIZONTAL CONTROL ORIGINATED ON 2ND ST ORDER CONTROL BY \_\_\_\_\_  
ON 1927 DATUM. ON 1983 (1990 GPS ADJUSTMENT) DATUM.  
COORDINATES (FT). 2ND ORDER COORDINATES (FT) 2ND ORDER  
NORTHING (Y) \_\_\_\_\_ NORTHING (Y) 807302.86  
EASTING (X) \_\_\_\_\_ EASTING (X) 780090.87  
GRID FLORIDA TRANSVERSE MERCATOR RECOVERED BY \_\_\_\_\_  
ZONE WEST DATE CONDITION \_\_\_\_\_  
FIELD BOOK BWL#1 PAGE 7



JOHNSON ENGINEERING, INC.

CIVIL ENGINEERS - LAND SURVEYORS

2158 JOHNSON STREET, POST OFFICE BOX 1550, FORT MYERS, FLORIDA, 33902-1550

PHONE: 941-334-0046