

LEE COUNTY SURVEY MARK DESCRIPTION

DESIGNATION 00 COUNTY LEE STATE FLORIDA
 LOCATED IN SEC _____ TWP 46 S. RGE 27 E USGS QUAD MAP CORKSCREW
 TO REACH SURVEY MARK:

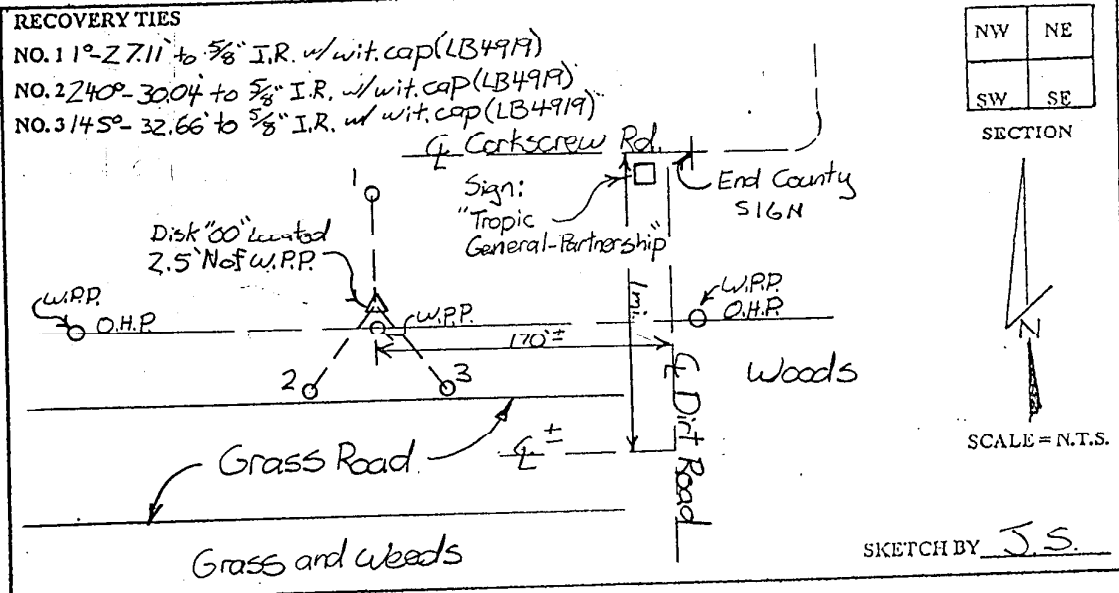
FROM I-75 RUN EAST ALONG CORKSCREW ROAD
 TO COUNTY LINE; THENCE SOUTH 1 MILE ± TO MARK.

TYPE OF SET 6" ROUND CONCRETE MONUMENT W/ 3" LEE
 MARK COUNTY PUBLIC WORKS ALUM. DISK, DATE SET JUNE 25 1998

HORIZONTAL CONTROL ORIGINATED ON 2ND INT ORDER CONTROL BY _____
 ON 1927 DATUM. ON 1983 (1990 GPS ADJUSTMENT) DATUM.

COORDINATES (FT.) 3RD ORDER COORDINATES (FT.) 3RD ORDER
 NORTHING (X) 764683.482
 EASTING (X) 799039.073

GRID FLORIDA TRANSVERSE MERCATOR RECOVERED BY _____
 ZONE WEST DATE CONDITION _____
 FIELD BOOK BWL #4 PAGE 14



JOHNSON ENGINEERING, INC.

CIVIL ENGINEERS - LAND SURVEYORS

2158 JOHNSON STREET, POST OFFICE BOX 1550, FORT MYERS, FLORIDA, 33902-1550

PHONE: 941-334-0046