

LEE COUNTY
SURVEY MARK DESCRIPTION

DESIGNATION 38 COUNTY LEE STATE FLORIDA
 LOCATED IN SEC 2 TWP 48S RGE 25E USGS QUAD MAP BONITA SPRINGS
 TO REACH SURVEY MARK:

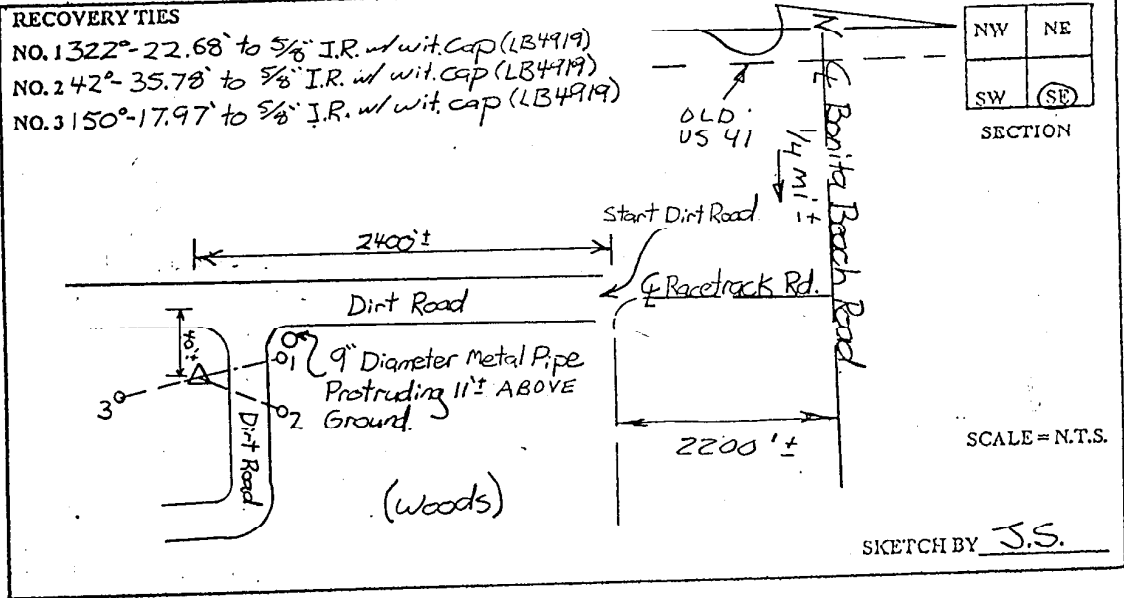
FROM OLD US 41 RUN EAST ALONG BONITA BEACH ROAD FOR 1/4 MILE ± TO RACETRACK ROAD; THENCE SOUTH 4600' ± TO MARK.

TYPE OF Set 6" Round Concrete Monument w/ 3" Lee County Public
 MARK works Alum. Disk DATE SET June 29 1998

HORIZONTAL CONTROL ORIGINATED ON AND 1st ORDER CONTROL BY _____
 ON 1927 DATUM. ON 1983 (1990 GPS ADJUSTMENT) DATUM.

COORDINATES (FT.) 2000 ORDER _____
 NORTHING (Y) _____
 EASTING (X) _____
 COORDINATES (FT.) 2000 ORDER _____
 NORTHING (Y) 721355.00
 EASTING (X) 730126.47

GRID FLORIDA TRANSVERSE MERCATOR RECOVERED BY _____
 ZONE WEST DATE CONDITION _____
 FIELD BOOK BWL #4 PAGE 19



JOHNSON ENGINEERING, INC.

CIVIL ENGINEERS - LAND SURVEYORS

2158 JOHNSON STREET, POST OFFICE BOX 1550, FORT MYERS, FLORIDA, 33902-1550

PHONE: 941-334-0046