

## LEE COUNTY SURVEY MARK DESCRIPTION

DESIGNATION 42 COUNTY LEE STATE FLORIDA  
 LOCATED IN SEC 3 TWP 48S RGE 25E USGS QUAD MAP BONITA SPRINGS

**TO REACH SURVEY MARK:**

FROM NEW 41 RUN EAST ALONG BONITA BEACH ROAD 0.5 mi.± TO SPANISH WELLS DR.; THENCE RUN SOUTH ALONG SPANISH WELLS DR. 1700± TO TREASURE CAY LN.; THENCE RUN WEST ALONG TREASURE CAY LN TO DEL LAGO WAY; THENCE RUN SOUTH ALONG DEL LAGO WAY TO ALHAMBRA LA. AND TO MARK.

TYPE OF SET 6" ROUND CONCRETE MONUMENT W/ 3" LEE COUNTY PUBLIC MARK WORKS ALUM. DISK DATE SET JUNE 29 1998

HORIZONTAL CONTROL ORIGINATED ON 2<sup>ND</sup> 1<sup>ST</sup> ORDER CONTROL BY \_\_\_\_\_  
 ON 1927 DATUM. ON 1983 (1990 GPS ADJUSTMENT) DATUM.

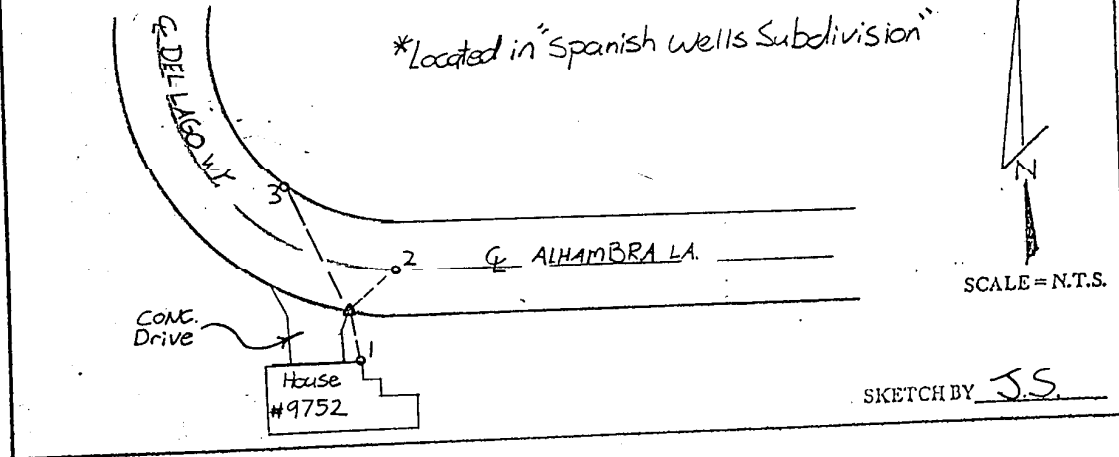
COORDINATES (FT.) SP ORDER \_\_\_\_\_  
 NORTHING (Y) \_\_\_\_\_  
 EASTING (X) \_\_\_\_\_

GRID FLORIDA TRANSVERSE MERCATOR  
 ZONE WEST  
 FIELD BOOK BWL #4 PAGE 18

RECOVERED BY \_\_\_\_\_  
 DATE CONDITION \_\_\_\_\_

**RECOVERY TIES**

- NO. 1 186°-48.00' to East Cor. of Garage
- NO. 2 73°-45.06' to PK 1 Disk (PCP, LB5151)
- NO. 3 524°-54.21' to PK 4 Disk (1B 4919)



SKETCH BY J.S.

### JOHNSON ENGINEERING, INC.

CIVIL ENGINEERS - LAND SURVEYORS  
 2158 JOHNSON STREET, POST OFFICE BOX 1550, FORT MYERS, FLORIDA, 33902-1550  
 PHONE: 941-334-0046