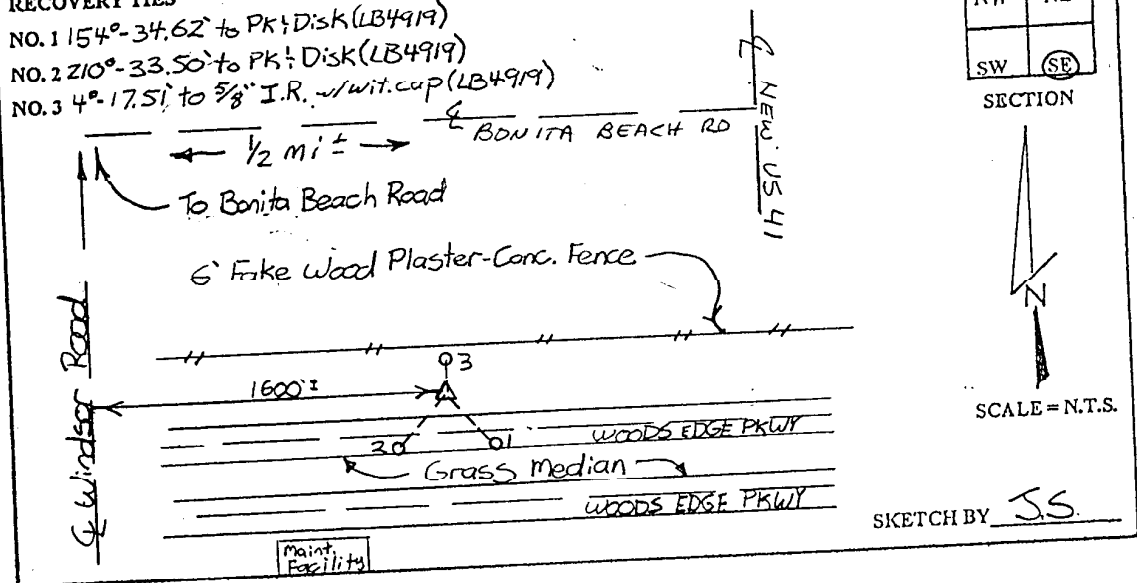


LEE COUNTY SURVEY MARK DESCRIPTION

DESIGNATION 44 COUNTY LEE STATE FLORIDA
 LOCATED IN SEC 4 TWP 48 S. RGE 25 E. USGS QUAD MAP BONITA SPRINGS
 TO REACH SURVEY MARK:
 FROM NEW 41 RUN WEST ALONG BONITA BEACH ROAD TO WINDSOR ROAD; THENCE SOUTH ALONG WINDSOR ROAD FOR 1 MILE± TO WOODS EDGE PARKWAY; THENCE EAST ALONG WOODS EDGE PARKWAY FOR 1600 FEET± TO MARK.
 TYPE OF SET 6" ROUND CONCRETE MONUMENT W/3" LEE COUNTY MARK PUBLIC WORKS ALUM. DISK DATE SET JUNE 26 19 98
 HORIZONTAL CONTROL ORIGINATED ON 2ND TTST ORDER CONTROL BY _____
 ON 1927 DATUM. ON 1983 (1990 GPS ADJUSTMENT) DATUM.
 COORDINATES (FT.) 3000 ORDER _____
 NORTHING (X) _____
 EASTING (X) _____
 GRID FLORIDA TRANSVERSE MERCATOR RECOVERED BY _____
 ZONE WEST DATE CONDITION _____
 FIELD BOOK BWL #4 PAGE 18

RECOVERY TIES

- NO. 1 154°-34.62' to PK 1/2 Disk (LB4919)
- NO. 2 210°-33.50' to PK 1/2 Disk (LB4919)
- NO. 3 4°-17.51' to 5/8" I.R. w/ wit. cup (LB4919)



JOHNSON ENGINEERING, INC.

CIVIL ENGINEERS - LAND SURVEYORS
 2158 JOHNSON STREET, POST OFFICE BOX 1550, FORT MYERS, FLORIDA, 33902-1550
 PHONE: 941-334-0046