

# LEE COUNTY SURVEY MARK DESCRIPTION

DESIGNATION 52 COUNTY LEE STATE FLORIDA  
 LOCATED IN SEC 30 TWP 47S RGE ZSE USGS QUAD MAP BONITA SPRINGS

TO REACH SURVEY MARK:  
 FROM NEW 41, RUN WEST ALONG BONITA BEACH ROAD TURNING NORTHERLY  
 ONTO HICKORY BLVD AND CONTINUE APPROXIMATELY 1 MILE  
 TO M<sup>c</sup> LAUGHLIN BLVD. (MARK IS FOUND AT 26977 M<sup>c</sup> LAUGHLIN).  
 (SEE SKETCH BELOW)

TYPE OF SET 6" ROUND CONCRETE MONUMENT w/ 3" LEE COUNTY PUBLIC  
 MARK WORKS ALUM. DISK DATE SET JUNE 10 1998

HORIZONTAL CONTROL ORIGINATED ON 2<sup>ND</sup> 1<sup>ST</sup> ORDER CONTROL BY \_\_\_\_\_  
 ON 1927 DATUM. ON 1983 (1990 GPS ADJUSTMENT) DATUM.

COORDINATES (FT) 731564.12 ORDER  
 NORTHING (Y) 731564.12  
 EASTING (X) 705207.62

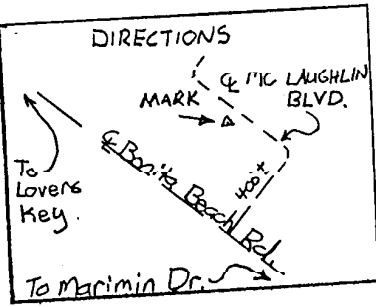
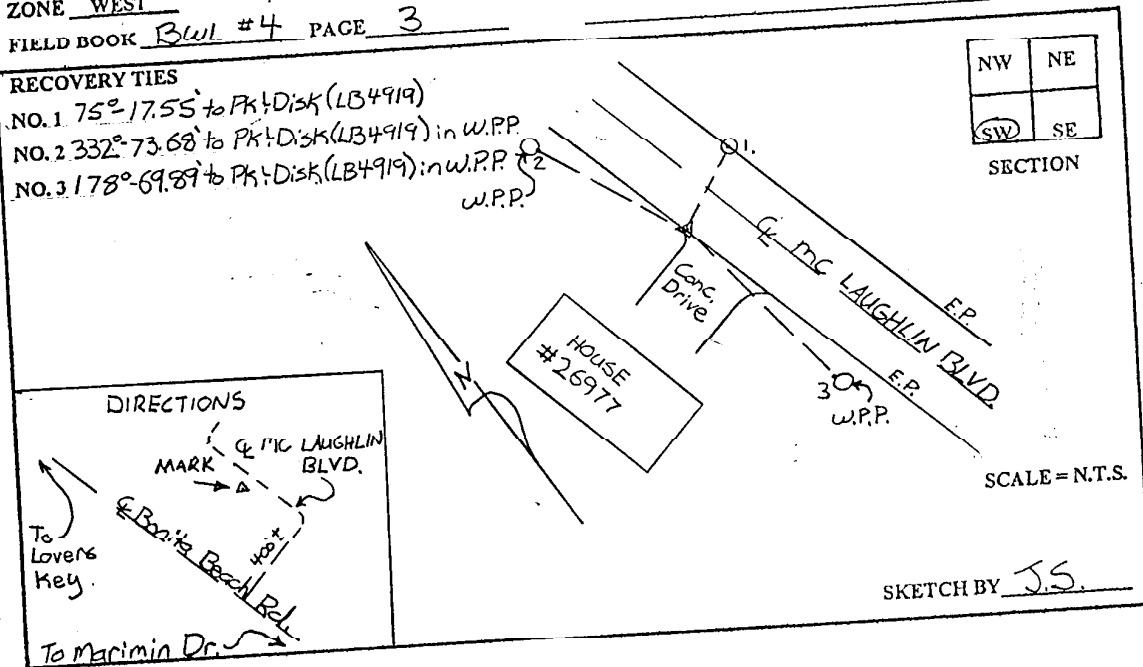
GRID FLORIDA TRANSVERSE MERCATOR  
 ZONE WEST

RECOVERED BY \_\_\_\_\_  
 DATE CONDITION \_\_\_\_\_

FIELD BOOK Bwl #4 PAGE 3

**RECOVERY TIES**

- NO. 1  $75^{\circ} 17.55'$  to PK & Disk (LB4919)
- NO. 2  $332^{\circ} 73.68'$  to PK & Disk (LB4919) in W.P.P.
- NO. 3  $178^{\circ} 69.89'$  to PK & Disk (LB4919) in W.P.P.



SCALE = N.T.S.  
 SKETCH BY J.S.

**JOHNSON ENGINEERING, INC.**  
 CIVIL ENGINEERS - LAND SURVEYORS  
 2158 JOHNSON STREET, POST OFFICE BOX 1550, FORT MYERS, FLORIDA, 33902-1550  
 PHONE: 941-334-0046