

LEE COUNTY SURVEY MARK DESCRIPTION

DESIGNATION 132 COUNTY LEE STATE FLORIDA
 LOCATED IN SEC 31 TWP 46S RGE 27E USGS QUAD MAP CORKSCREW N.W.

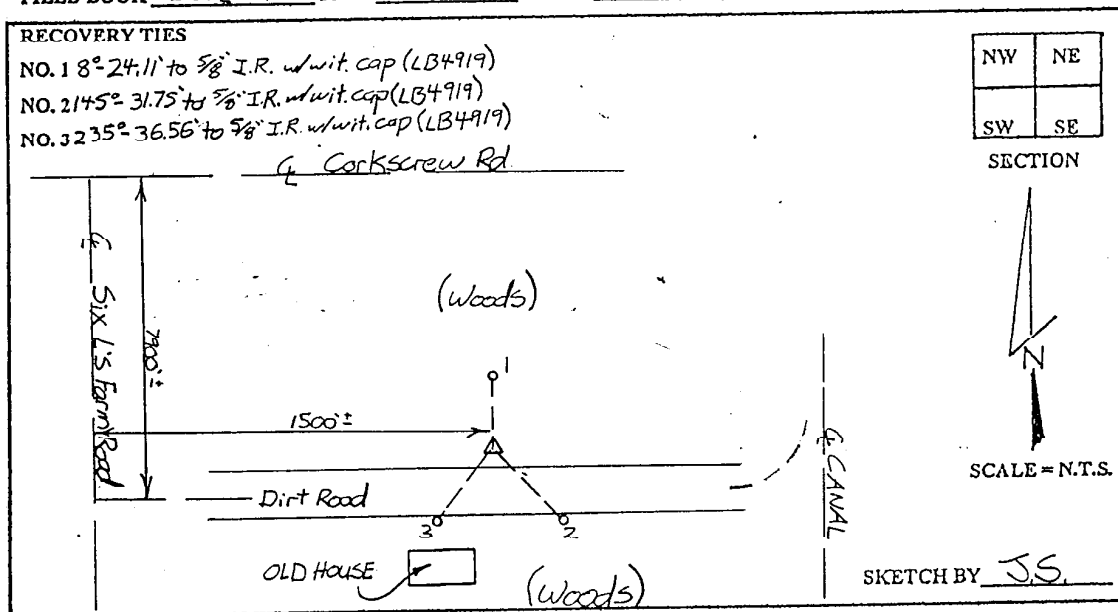
TO REACH SURVEY MARK:
 FROM I-75, RUN EASTERLY FROM EXIT 19 ALONG CORKSCREW ROAD
 7mi.± TO SIX L'S FARM ROAD; THENCE RUN SOUTHERLY DOWN SIX L'S FARM
 ROAD 79.00'± TO A DIRT ROAD; THENCE RUN EASTERLY ALONG SAID DIRT
 ROAD FOR 1500'± TO MARK.

TYPE OF SET 6" ROUND CONCRETE MONUMENT W/ 3" LEE COUNTY
 MARK PUBLIC WORKS ALUM. DISK DATE SET JUNE 25 1998

HORIZONTAL CONTROL ORIGINATED ON 2ND 1ST ORDER CONTROL BY _____
 ON 1927 DATUM. ON 1983 (1990 GPS ADJUSTMENT) DATUM.

COORDINATES (FT.) 2ND 1ST ORDER COORDINATES (FT.) 2ND 1ST ORDER
 NORTHING (X) _____ NORTHING (X) 761608.27
 EASTING (X) _____ EASTING (X) 769055.59

GRID FLORIDA TRANSVERSE MERCATOR RECOVERED BY _____
 ZONE WEST DATE CONDITION _____
 FIELD BOOK BWL #4 PAGE 15



JOHNSON ENGINEERING, INC.

CIVIL ENGINEERS - LAND SURVEYORS

2158 JOHNSON STREET, POST OFFICE BOX 1550, FORT MYERS, FLORIDA, 33902-1550

PHONE: 941-334-0046