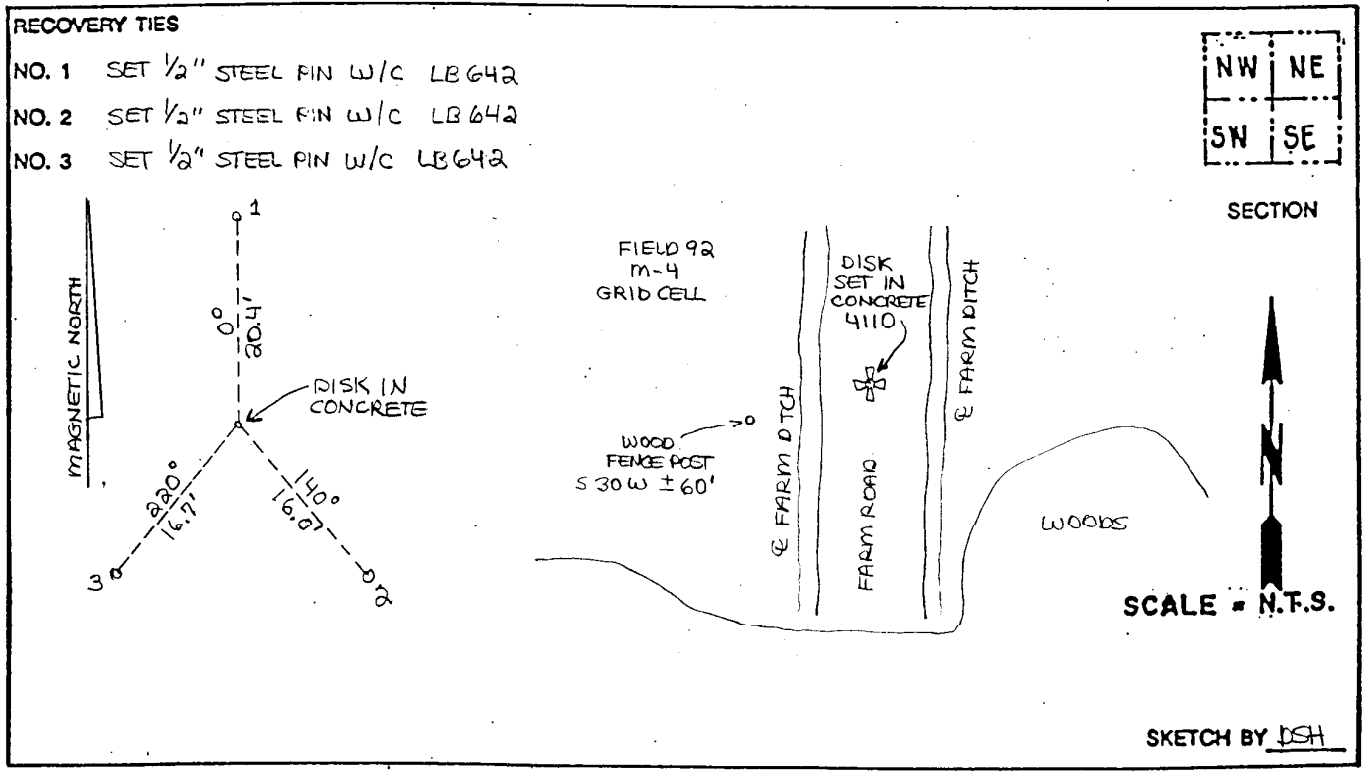


LEE COUNTY SURVEY MARK DESCRIPTION

1112

DESIGNATION 4110 COUNTY CHARLOTTE STATE FL.
 LOCATED IN SEC _____ TWP _____ RGE _____ USGS QUAD MAP _____
 TO REACH SURVEY MARK:

TYPE OF 3/4" ALUMINUM LEE COUNTY SURVEY CONTROL MARK ON 3/4" PIPE SET IN CONCRETE
 MARK 4110 DATE SET APRIL 29 19 98
 HORIZONTAL CONTROL ORIGINATED ON 2nd/1st ORDER CONTROL BY NATIONAL GEODETIC SURVEY (NGS)
 ON 1927 DATUM. ON 1983 (1990 GPS Adjustment) DATUM.
 COORDINATES (FT), 2nd ORDER COORDINATES (FT), 2nd ORDER
 NORTHING (M) N/A NORTHING (M) 885640.9528
 EASTING (M) N/A EASTING (M) 754891.5344
 GRID FLORIDA TRANSVERSE MERCATOR RECOVERED BY _____
 ZONE WEST DATE, CONDITION _____
 FIELD BOOK JEL # 1 PAGE 44



JOHNSON ENGINEERING, INC.
 CIVIL ENGINEERS LAND SURVEYORS
 2158 JOHNSON STREET, POST OFFICE BOX 1550, FORT MYERS, FLORIDA, 33902-1550
 PHONE (941) 334-0046