

LEE COUNTY SURVEY MARK DESCRIPTION

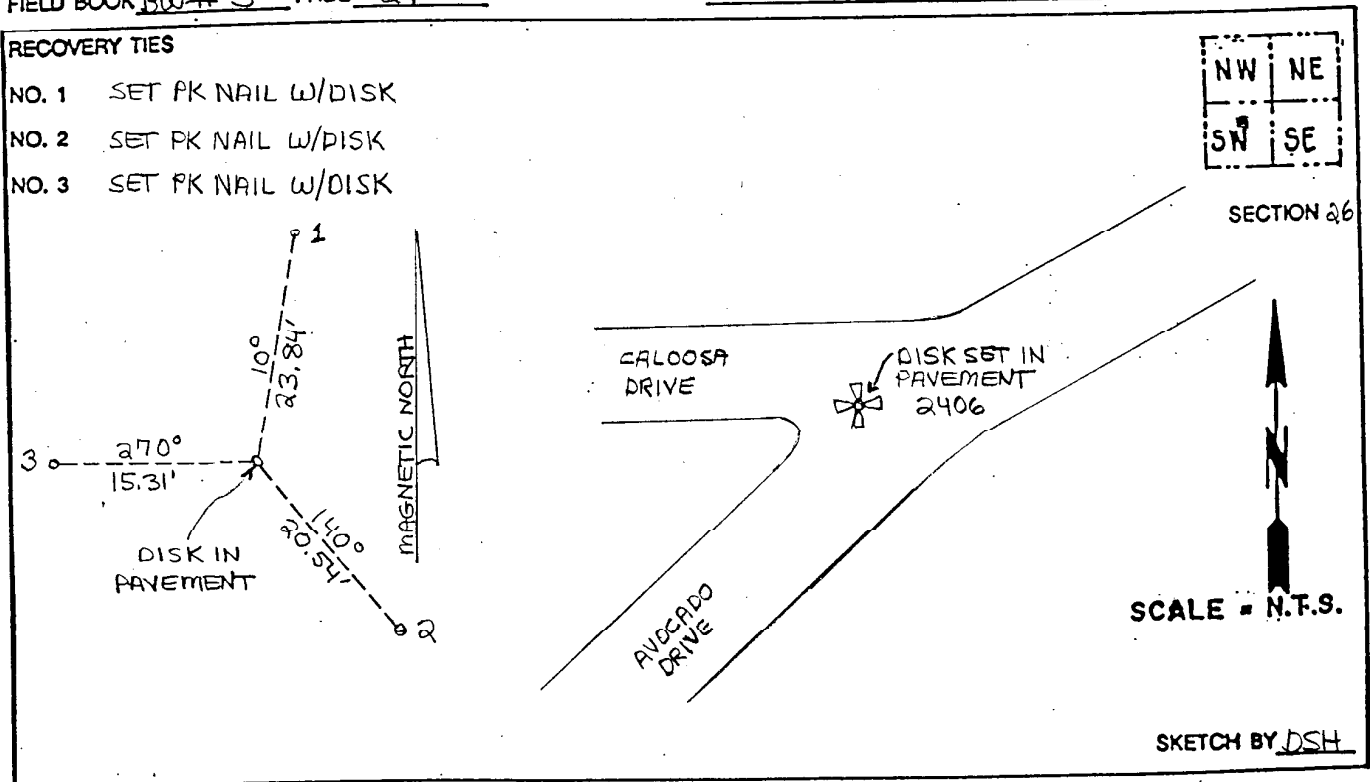
1109

DESIGNATION 2406 COUNTY LEE STATE FL.
 LOCATED IN SEC 26 TWP 44 S RGE 24 E USGS QUAD MAP FORT MYERS SW
 TO REACH SURVEY MARK:

TYPE OF 3 1/4" ALUMINUM LEE COUNTY SURVEY CONTROL MARK SET IN PAVEMENT
 MARK 2406 DATE SET APRIL 23 19 98
 HORIZONTAL CONTROL ORIGINATED ON 2nd/1st ORDER CONTROL BY NATIONAL GEODETIC SURVEY (NGS)
 ON 1927 DATUM. ON 1983 (1990 GPS Adjustment) DATUM.
 COORDINATES (FT), 2nd ORDER COORDINATES (FT), 2nd ORDER
 NORTHING (M) N/A NORTHING (M) 830330.5642
 EASTING (M) N/A EASTING (M) 693780.7045
 GRID FLORIDA TRANSVERSE MERCATOR RECOVERED BY _____
 ZONE WEST DATE, CONDITION _____
 FIELD BOOK BW # 3 PAGE 21

RECOVERY TIES

- NO. 1 SET PK NAIL W/DISK
- NO. 2 SET PK NAIL W/DISK
- NO. 3 SET PK NAIL W/DISK



JOHNSON ENGINEERING, INC.
 CIVIL ENGINEERS LAND SURVEYORS
 2158 JOHNSON STREET, POST OFFICE BOX 1550, FORT MYERS, FLORIDA, 33902-1550
 PHONE (941) 334-0046