

LEE COUNTY  
SURVEY MARK DESCRIPTION

1101

DESIGNATION 2361 COUNTY LEE STATE FL.

LOCATED IN SEC 6 TWP 46 S RGE 25 E USGS QUAD MAP FORT MYERS SE

TO REACH SURVEY MARK:

ALICO ROAD THEN NORTH ON CUSTY ROAD THEN WEST ON SHALOM LANE TO END

TYPE OF 3/4" ALUMINUM LEE COUNTY SURVEY CONTROL MARK SET IN CONCRETE

MARK 2361 DATE SET APRIL 18 1998

HORIZONTAL CONTROL ORIGINATED ON 2<sup>nd</sup>/1<sup>st</sup> ORDER CONTROL BY NATIONAL GEODETIC SURVEY

ON 1927 DATUM. ON 1983 (1990 GPS Adjustment) DATUM.

COORDINATES (FT), 2<sup>nd</sup> ORDER COORDINATES (FT), 2<sup>nd</sup> ORDER

NORTHING (M) N/A NORTHING (M) 787907.090

EASTING (M) N/A EASTING (M) 707093.074

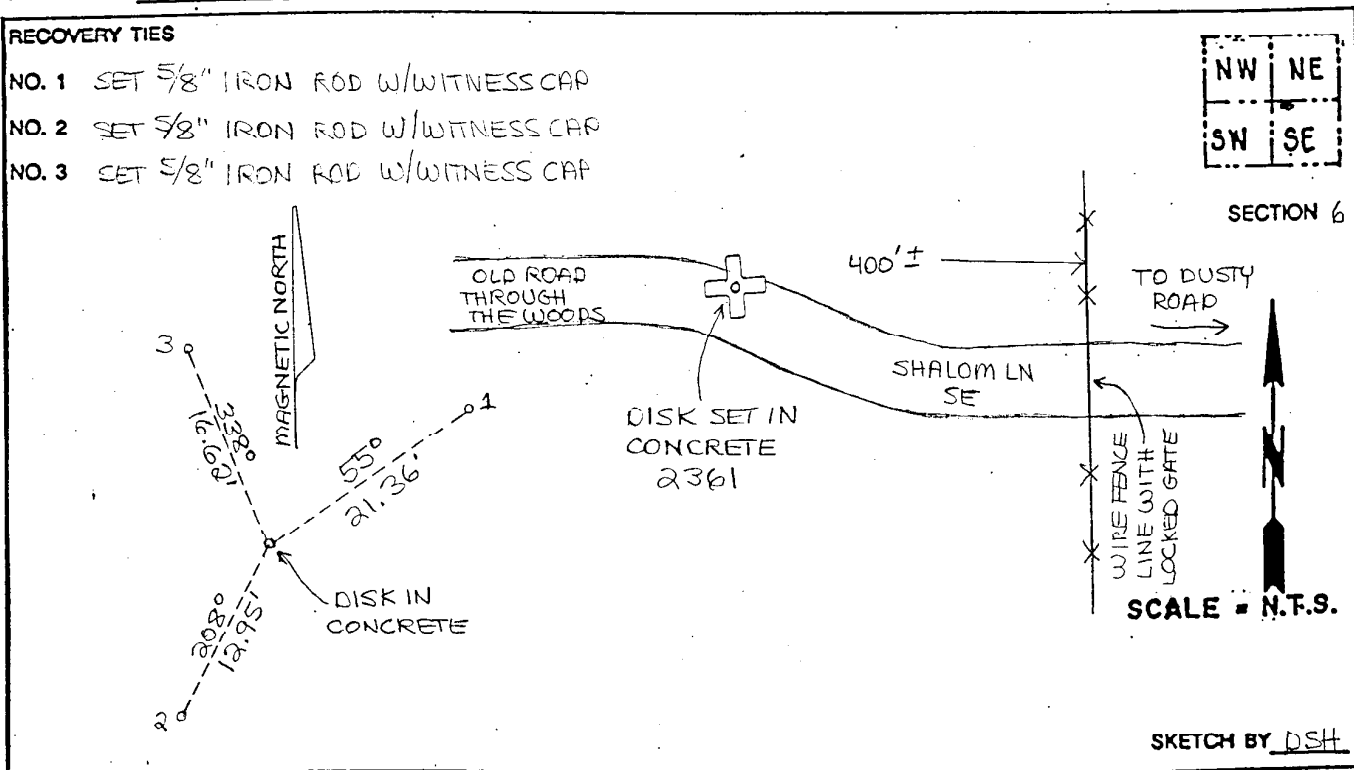
GRID FLORIDA TRANSVERSE MERCATOR RECOVERED BY \_\_\_\_\_

ZONE WEST DATE, CONDITION \_\_\_\_\_

FIELD BOOK PW#1 PAGE 35

RECOVERY TIES

- NO. 1 SET 5/8" IRON ROD W/WITNESS CAP
- NO. 2 SET 5/8" IRON ROD W/WITNESS CAP
- NO. 3 SET 5/8" IRON ROD W/WITNESS CAP



SKETCH BY DST