

# LEE COUNTY SURVEY MARK DESCRIPTION

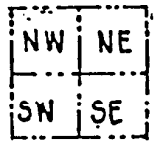
1086

DESIGNATION 2054 COUNTY LEE STATE FL.  
 LOCATED IN SEC 9 TWP 45S RGE 27 E USGS QUAD MAP ALVA SE  
 TO REACH SURVEY MARK:

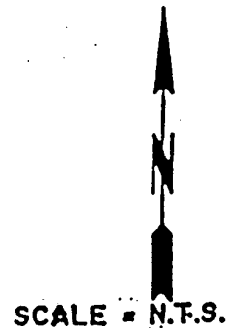
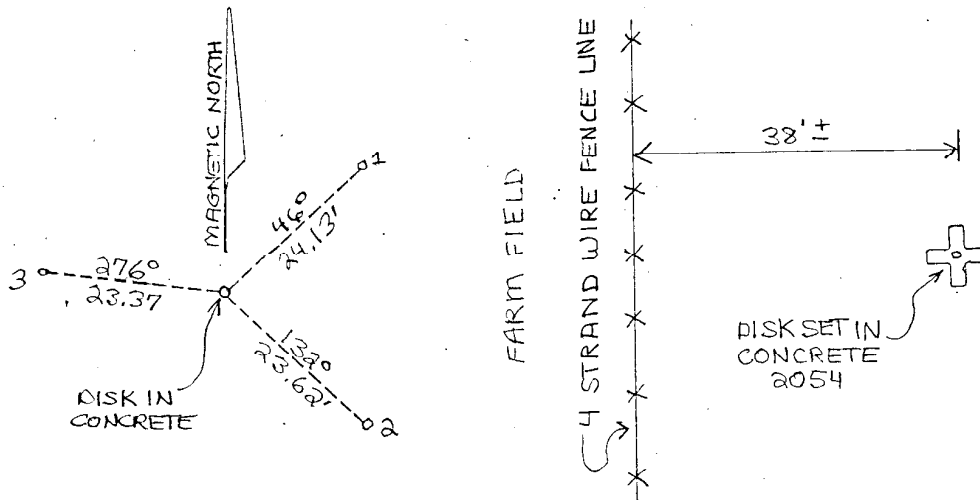
TYPE OF 3/4" ALUMINUM LEE COUNTY SURVEY CONTROL MARK SET IN CONCRETE  
 MARK 2054 DATE SET APRIL 18 19 98  
 HORIZONTAL CONTROL ORIGINATED ON 2<sup>nd</sup>/1<sup>st</sup> ORDER CONTROL BY NATIONAL GEODETIC SURVEY (NGS)  
 ON 1927 DATUM. ON 1983 (1990 GPS Adjustment) DATUM.  
 COORDINATES (FT), 2<sup>nd</sup> ORDER COORDINATES (FT), 2<sup>nd</sup> ORDER  
 NORTHING (M) N/A NORTHING (M) 817073.710  
 EASTING (M) N/A EASTING (M) 779941.653  
 GRID FLORIDA TRANSVERSE MERCATOR RECOVERED BY \_\_\_\_\_  
 ZONE WEST DATE, CONDITION \_\_\_\_\_  
 FIELD BOOK RM#1 PAGE 7

**RECOVERY TIES**

- NO. 1 SET 5/8" IRON ROD & WITNESS CAP
- NO. 2 SET 5/8" IRON ROD & WITNESS CAP
- NO. 3 SET 5/8" IRON ROD & WITNESS CAP



SECTION



SKETCH BY DSH

**JOHNSON ENGINEERING, INC.**  
 CIVIL ENGINEERS LAND SURVEYORS  
 2158 JOHNSON STREET, POST OFFICE BOX 1550, FORT MYERS, FLORIDA, 33902-1550  
 PHONE (941) 334-0046