

LEE COUNTY
SURVEY MARK DESCRIPTION

1084

DESIGNATION 2415 COUNTY LEE STATE FL.
 LOCATED IN SEC 10 TWP 45 S RGE 24 E USGS QUAD MAP FORT MYERS SW
 TO REACH SURVEY MARK:

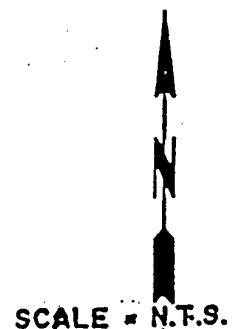
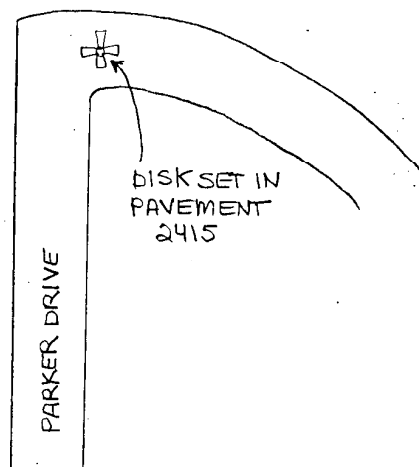
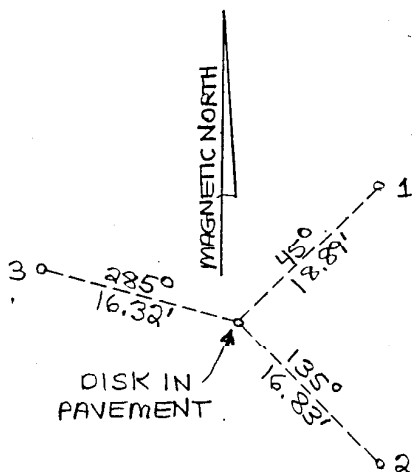
TYPE OF 3/4" ALUMINUM LEE COUNTY SURVEY CONTROL MARK SET IN PAVEMENT
 MARK 2415 DATE SET APRIL 27 1998
 HORIZONTAL CONTROL ORIGINATED ON 2nd/1st ORDER CONTROL BY NATIONAL GEODETIC SURVEY (NGS)
 ON 1927 DATUM. ON 1983 (1990 GPS Adjustment) DATUM.
 COORDINATES (FT), 2nd ORDER COORDINATES (FT), 2nd ORDER
 NORTHING (M) N/A NORTHING (M) 813681.3796
 EASTING (M) N/A EASTING (M) 687690.1872
 GRID FLORIDA TRANSVERSE MERCATOR RECOVERED BY _____
 ZONE WEST DATE, CONDITION _____
 FIELD BOOK BW # 3 PAGE 19

RECOVERY TIES

- NO. 1 SET PK NAIL W/DISK
- NO. 2 SET PK NAIL W/DISK
- NO. 3 SET PK NAIL W/DISK



SECTION 10



SKETCH BY DSH