

LEE COUNTY SURVEY MARK DESCRIPTION

1069

DESIGNATION 4136 COUNTY _____ STATE FL.

LOCATED IN SEC _____ TWP _____ RGE _____ USGS QUAD MAP _____

TO REACH SURVEY MARK:

FROM INTERSECTION OF HUBER RD. AND NALLE GRADE RD. GO WEST ON DIRT RD.
FOR ± 1.0 MILE (NOTE: ROAD CURVES TO NORTH TO OPENED GATE)

TYPE OF 3/4" ALUMINUM LEE COUNTY SURVEY CONTROL MARK ON 3/4" PIPE SET IN CONCRETE

MARK 4136 DATE SET APRIL 28 19 98

HORIZONTAL CONTROL ORIGINATED ON 2nd/1st ORDER CONTROL BY NATIONAL GEODETIC SURVEY (NGS)

ON 1927 DATUM. ON 1983 (1990 GPS Adjustment) DATUM.

COORDINATES (FT), 2nd ORDER COORDINATES (FT), 2nd ORDER

NORTHING (M) N/A NORTHING (M) 885557.3091

EASTING (M) N/A EASTING (M) 702289.8542

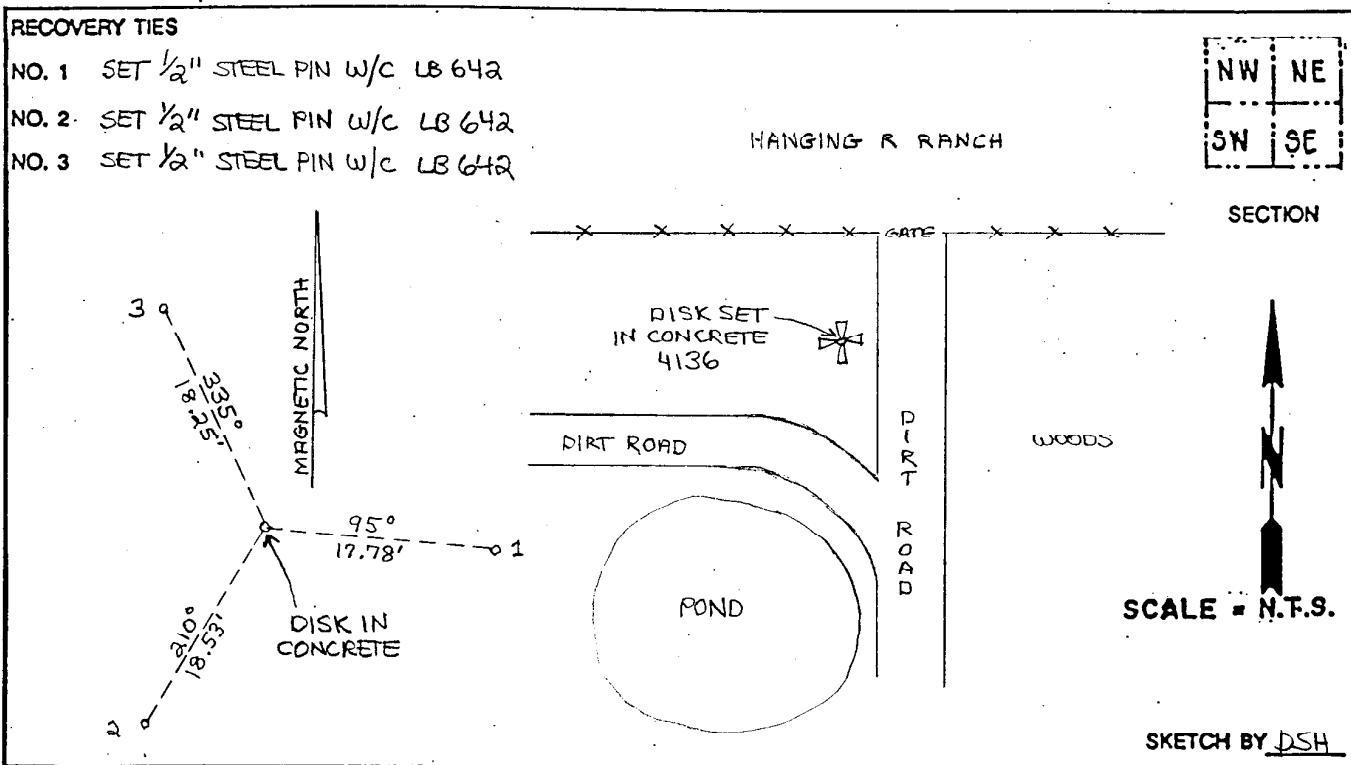
GRID FLORIDA TRANSVERSE MERCATOR RECOVERED BY _____

ZONE WEST DATE, CONDITION _____

FIELD BOOK JEL # 2 PAGE 53

RECOVERY TIES

- NO. 1 SET 1/2" STEEL PIN W/C LB 642
- NO. 2 SET 1/2" STEEL PIN W/C LB 642
- NO. 3 SET 1/2" STEEL PIN W/C LB 642



JOHNSON ENGINEERING, INC.

CIVIL ENGINEERS LAND SURVEYORS
2158 JOHNSON STREET, POST OFFICE BOX 1550, FORT MYERS, FLORIDA, 33902-1550
PHONE (941) 334-0046