

# LEE COUNTY SURVEY MARK DESCRIPTION

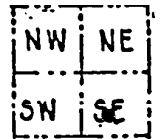
1029

DESIGNATION 2460 COUNTY LEE STATE FL.  
 LOCATED IN SEC 32 TWP 44 S RGE 24 E USGS QUAD MAP FORT MYERS SW  
 TO REACH SURVEY MARK:

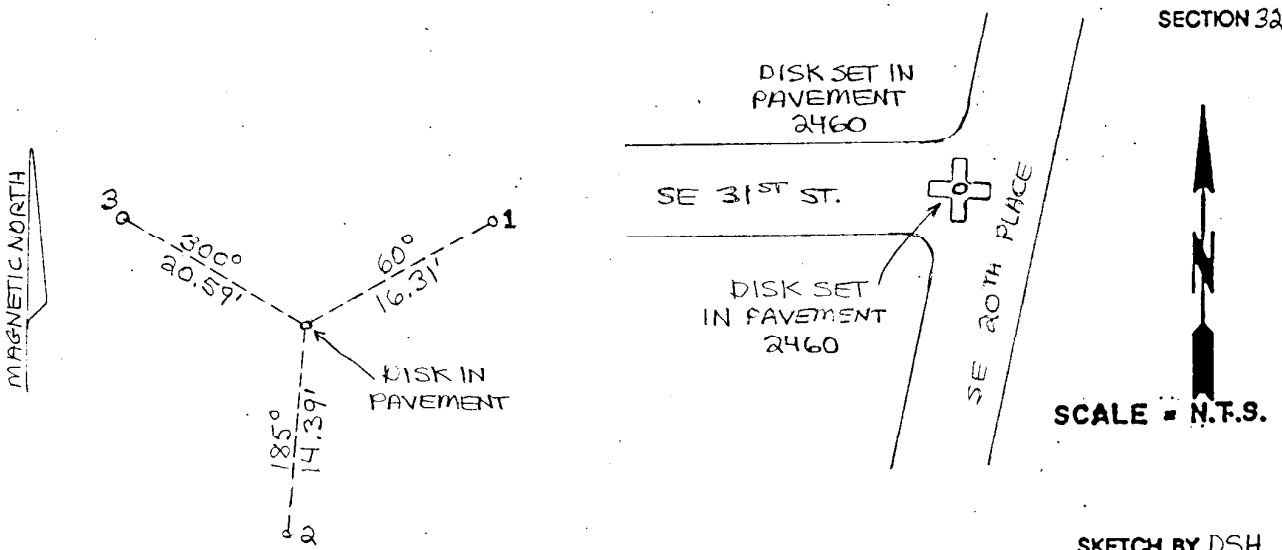
TYPE OF 3/4" ALUMINUM LEE COUNTY SURVEY CONTROL MARK SET IN PAVEMENT  
 MARK 2460 DATE SET APRIL 23 1998  
 HORIZONTAL CONTROL ORIGINATED ON 2<sup>nd</sup>/1<sup>st</sup> ORDER CONTROL BY NATIONAL GEODETIC SURVEY (NGS)  
 ON 1927 DATUM. ON 1983 (1990 GPS Adjustment) DATUM.  
 COORDINATES (FT), 2<sup>nd</sup> ORDER COORDINATES (FT), 2<sup>nd</sup> ORDER  
 NORTHING (M) N/A NORTHING (M) 821910.2796  
 EASTING (M) N/A EASTING (M) 618834.8007  
 GRID FLORIDA TRANSVERSE MERCATOR RECOVERED BY \_\_\_\_\_  
 ZONE WEST DATE, CONDITION \_\_\_\_\_  
 FIELD BOOK BW # 3 PAGE 12

**RECOVERY TIES**

- NO. 1 SET PK NAIL W/DISK
- NO. 2 SET PK NAIL W/DISK
- NO. 3 SET PK NAIL W/DISK



SECTION 32



**JOHNSON ENGINEERING, INC.**  
 CIVIL ENGINEERS LAND SURVEYORS  
 2158 JOHNSON STREET, POST OFFICE BOX 1550, FORT MYERS, FLORIDA, 33902-1550  
 PHONE (941) 334-0046