

# LEE COUNTY SURVEY MARK DESCRIPTION

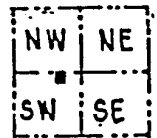
1012

DESIGNATION 2409 COUNTY LEE STATE FL.  
 LOCATED IN SEC 3 TWP 45 S RGE 24 E USGS QUAD MAP FORT MYERS SW  
 TO REACH SURVEY MARK:

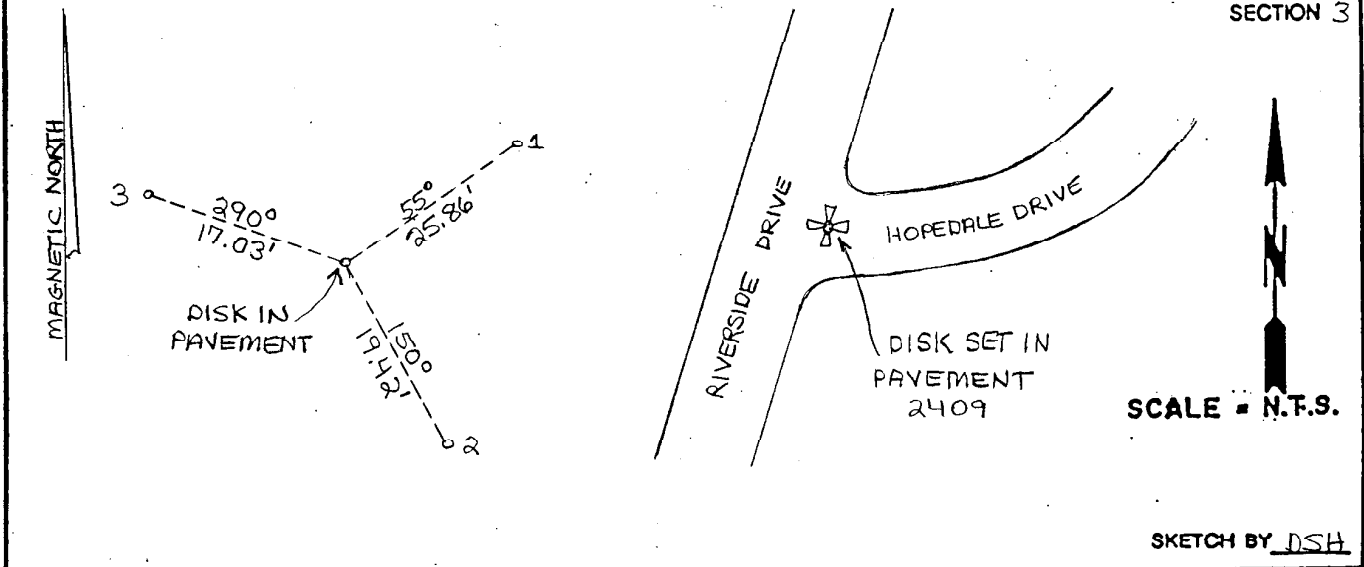
TYPE OF 3/4" ALUMINUM LEE COUNTY SURVEY CONTROL MARK SET IN PAVEMENT  
 MARK 2409 DATE SET APRIL 23 19 98  
 HORIZONTAL CONTROL ORIGINATED ON 2<sup>nd</sup>/1<sup>st</sup> ORDER CONTROL BY NATIONAL GEODETIC SURVEY (NGS)  
 ON 1927 DATUM. ON 1983 (1990 GPS Adjustment) DATUM.  
 COORDINATES (FT), 2<sup>nd</sup> ORDER COORDINATES (FT), 2<sup>nd</sup> ORDER  
 NORTHING (M) N/A NORTHING (M) 819818.4240  
 EASTING (M) N/A EASTING (M) 689427.6629  
 GRID FLORIDA TRANSVERSE MERCATOR RECOVERED BY \_\_\_\_\_  
 ZONE WEST DATE, CONDITION \_\_\_\_\_  
 FIELD BOOK R/W # 3 PAGE 20

**RECOVERY TIES**

- NO. 1 SET PK NAIL W/DISK
- NO. 2 SET PK NAIL W/DISK
- NO. 3 SET PK NAIL W/DISK



SECTION 3



SKETCH BY DSH