

# LEE COUNTY SURVEY MARK DESCRIPTION

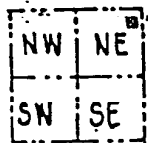
1008

DESIGNATION 4071 COUNTY LEE STATE FL.  
 LOCATED IN SEC 25 TWP 43S RGE 26E USGS QUAD MAP OLGA  
 TO REACH SURVEY MARK:

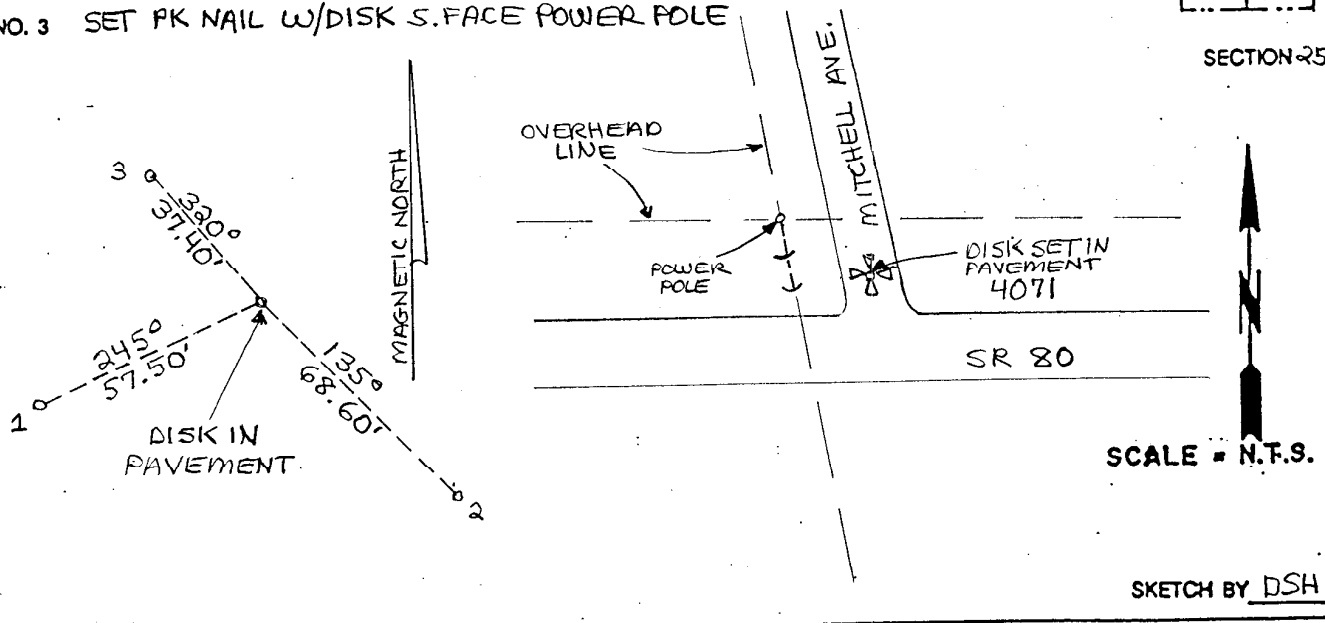
TYPE OF 3/4" ALUMINUM LEE COUNTY SURVEY CONTROL MARK SET IN PAVEMENT  
 MARK 4071 DATE SET APRIL 6 19 98  
 HORIZONTAL CONTROL ORIGINATED ON 2<sup>nd</sup>/1<sup>st</sup> ORDER CONTROL BY NATIONAL GEODETIC SURVEY (NGS)  
 ON 1927 DATUM. ON 1983 (1990 GPS Adjustment) DATUM.  
 COORDINATES (FT), 2<sup>nd</sup> ORDER COORDINATES (FT), 2<sup>nd</sup> ORDER  
 NORTHING (M) N/A NORTHING (M) 865471.1041  
 EASTING (M) N/A EASTING (M) 765038.0410  
 GRID FLORIDA TRANSVERSE MERCATOR RECOVERED BY \_\_\_\_\_  
 ZONE WEST DATE, CONDITION \_\_\_\_\_  
 FIELD BOOK JET #2 PAGE 19

**RECOVERY TIES**

- NO. 1 SET PK NAIL W/DISK
- NO. 2 SET PK NAIL W/DISK
- NO. 3 SET PK NAIL W/DISK S. FACE POWER POLE



SECTION 25



SKETCH BY DSH