

LEE COUNTY SURVEY MARK DESCRIPTION

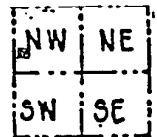
1004

DESIGNATION 2461 COUNTY LEE STATE FL.
 LOCATED IN SEC 33 TWP 44 S RGE 24 E USGS QUAD MAP FORT MYERS SW
 TO REACH SURVEY MARK:

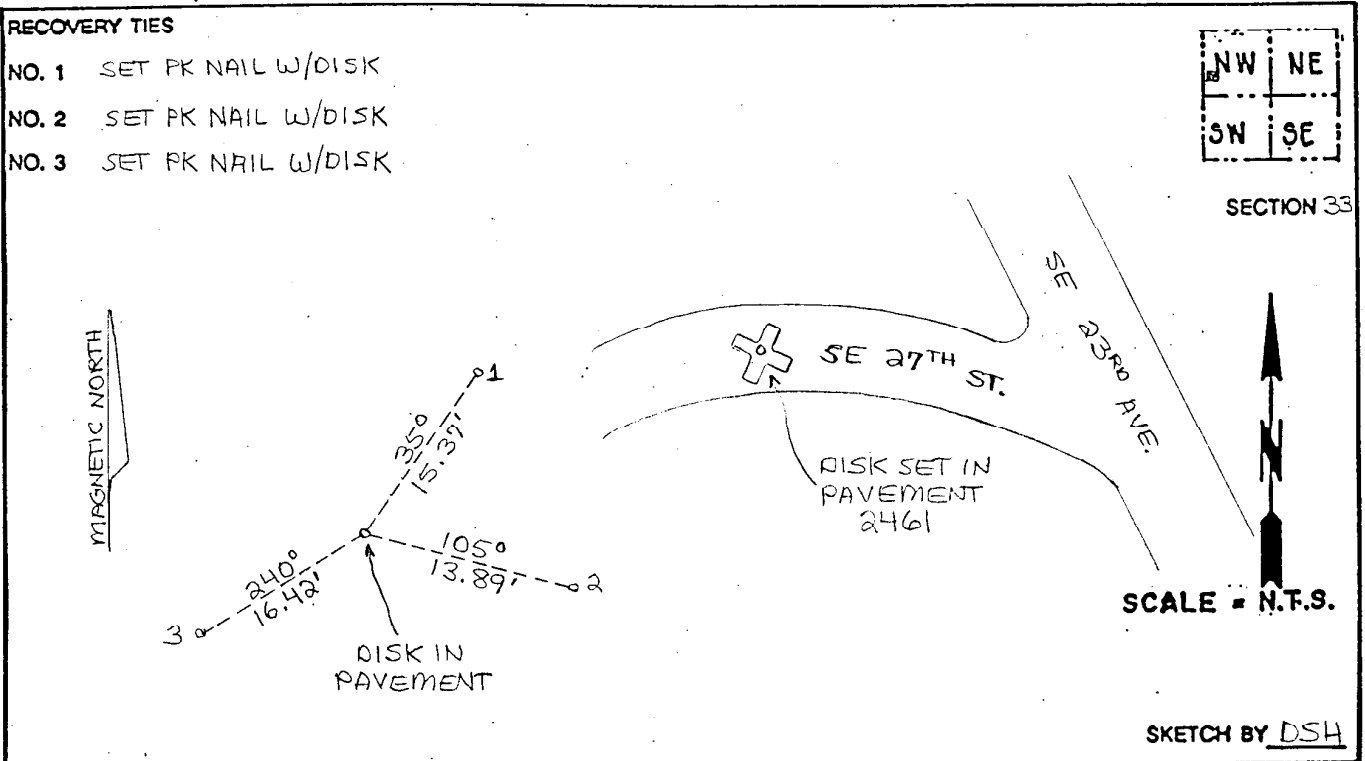
TYPE OF 3/4" ALUMINUM LEE COUNTY SURVEY CONTROL MARK SET IN PAVEMENT
 MARK 2461 DATE SET APRIL 22 19 98
 HORIZONTAL CONTROL ORIGINATED ON 2nd/1st ORDER CONTROL BY NATIONAL GEODETIC SURVEY (NGS)
 ON 1927 DATUM. ON 1983 (1990 GPS Adjustment) DATUM.
 COORDINATES (FT), 2nd ORDER COORDINATES (FT), 2nd ORDER
 NORTHING (N) N/A NORTHING (N) 824431.3347
 EASTING (E) N/A EASTING (E) 681117.7063
 GRID FLORIDA TRANSVERSE MERCATOR RECOVERED BY _____
 ZONE WEST DATE, CONDITION _____
 FIELD BOOK BW# 3 PAGE 13

RECOVERY TIES

- NO. 1 SET PK NAIL W/DISK
- NO. 2 SET PK NAIL W/DISK
- NO. 3 SET PK NAIL W/DISK



SECTION 33



SCALE = N.T.S.

SKETCH BY DSH

JOHNSON ENGINEERING, INC.
 CIVIL ENGINEERS LAND SURVEYORS
 2158 JOHNSON STREET, POST OFFICE BOX 1550, FORT MYERS, FLORIDA, 33902-1550
 PHONE (941) 334-0046