

# LEE COUNTY SURVEY MARK DESCRIPTION

DESIGNATION 5549 COUNTY Lee STATE FL

LOCATION IN SEC 18 TWP 46 S. RGE 22 E. USGS QUAD MAP Wulfert, Fla

TO REACH SURVEY MARK:

#5549 to the intersection of Tarpon Bay Road and San-Cap Road; thence west 5.1 miles to the intersection of San-Cap Road and Bowmans Beach; thence south .3 miles along Bowmans Beach Road.

TYPE OF 3 1/4" Aluminum Lee County Survey Control Mark Set in Concrete

MARK 5549 DATE SET Feb. 1999

HORIZONTAL CONTROL ORIGINATED ON 2nd/1st ORDER CONTROL BY National Geodetic Survey (NGS)  
ON 1927 DATUM. ON 1983 (1990 GPS Adj.) DATUM.

COORDINATES (FT), 2nd ORDER COORDINATES (FT), 2nd ORDER

NORTHING (Y) N/A NORTHING (Y) 773610.760

EASTING (X) N/A EASTING (X) 606223.916

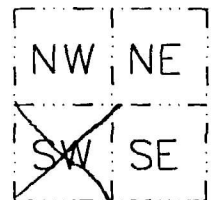
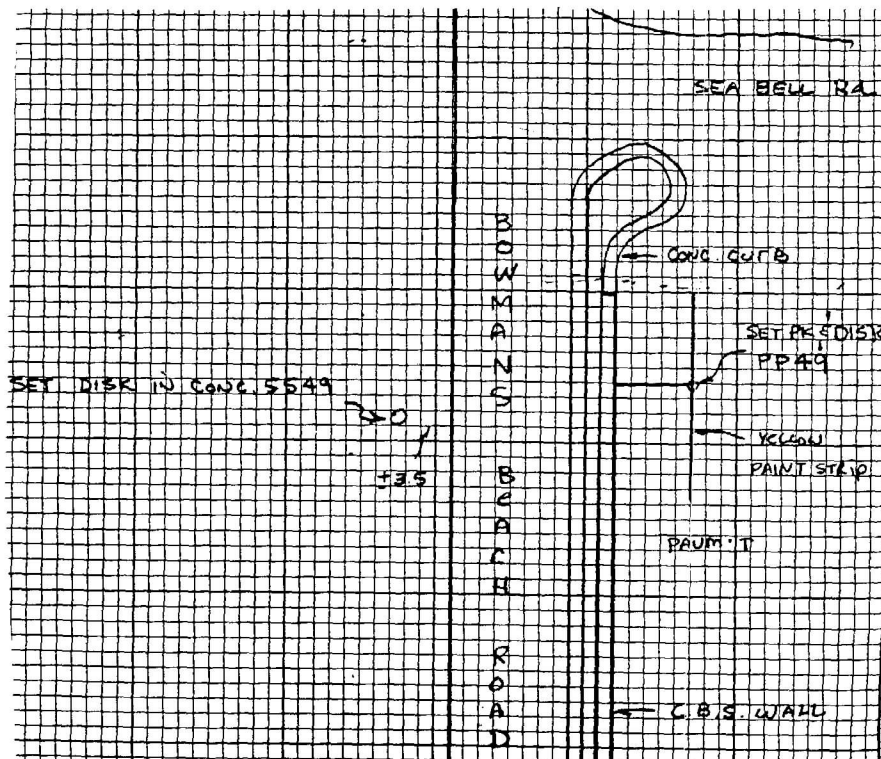
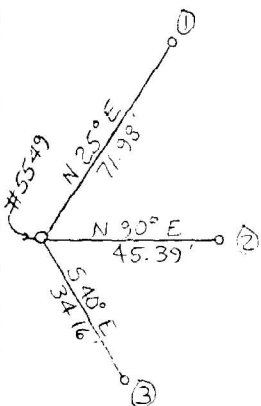
GRID Florida Transverse Mercator RECOVERED BY \_\_\_\_\_

ZONE West DATE, CONDITION \_\_\_\_\_

FIELD BOOK 4 PAGE(S) 45

## RECOVERY TIES:

- ① Set PK nail + Disk
- ② Set PK nail + Disk
- ③ Set PK nail + Disk



SECTION 18



SCALE: N.T.S.

SKETCH BY SAW

**JOHNSON ENGINEERING, INC.**

ENGINEERS, SURVEYORS AND ECOLOGISTS

2158 JOHNSON STREET, POST OFFICE BOX 1550, FORT MYERS, FLORIDA 33902-1550, PHONE (941) 334-0048

219