

LEE COUNTY SURVEY MARK DESCRIPTION

DESIGNATION 5530 COUNTY Lee STATE FL

LOCATION IN SEC 16 TWP 44 S. RGE 22 E. USGS QUAD MAP Matlacha, Fla

TO REACH SURVEY MARK:

TO REACH FROM PINE ISLAND GO NORTH ON STRANGE YELLOW RD
TO ROAD (P) GOING TO BLUE CRAB BAY- ENTER AND TAKE
A CIRCLING RD TO EASTERY END OF LOOP # G.P.S. # 5530

TYPE OF 3 1/4" Aluminum Lee County Survey Control Mark Set in Concrete

MARK 5530 DATE SET Feb. 1999

HORIZONTAL CONTROL ORIGINATED ON 2nd/1st ORDER CONTROL BY National Geodetic Survey (NGS)
ON 1927 DATUM. ON 1983 (1990 GPS Adj.) DATUM.

COORDINATES (FT), 2nd ORDER COORDINATES (FT), 2nd ORDER

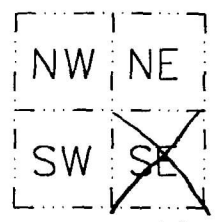
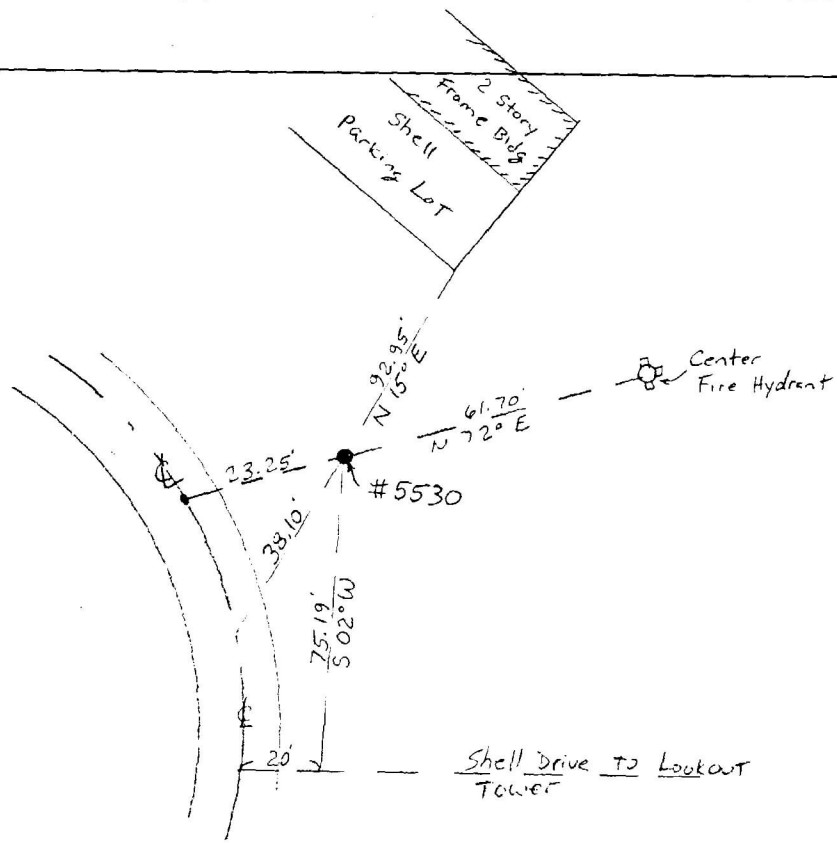
NORTHING (Y) N/A NORTHING (Y) 837243.798

EASTING (X) N/A EASTING (X) 619198.325

GRID Florida Transverse Mercator RECOVERED BY _____
ZONE West DATE, CONDITION _____

FIELD BOOK 4 PAGE(S) 64

RECOVERY TIES:



SCALE: N.T.S.

SKETCH BY SAW

200