

LEE COUNTY SURVEY MARK DESCRIPTION

DESIGNATION 45-21-35-01 COUNTY LEE STATE FL

LOCATED IN SEC 35 TWP 45 RGE 21 USGS QUAD MAP CAPTIVA, FL.

TO REACH SURVEY MARK FROM

From the intersection of Captiva Drive and the North end of Blind Pass bridge travel North along centerline of said Captiva Drive for +/- 2.66 Miles to a point. The monument is 9.5' West of wooden "Timmy's Nook" sign. It is 12.5' East of Ely edge of pav't. It is 47.3' Southeast of wooden power pole. The monument is a concrete monument W/ brass disk.

TYPE OF 4"x4" CONCRETE MONUMENT W/ BRASS DISK

MARK GPS 45-21-35-01 DATE REF APRIL 24, 19 92

HORIZONTAL CONTROL ORIGINATED ON 2ND/1ST ORDER CONTROL BY USC & GS / NGS

ON NAD' 27 DATUM. ON NAD' 83 DATUM.

COORDINATES (FT), 2ND ORDER COORDINATES (FT), 2ND ORDER

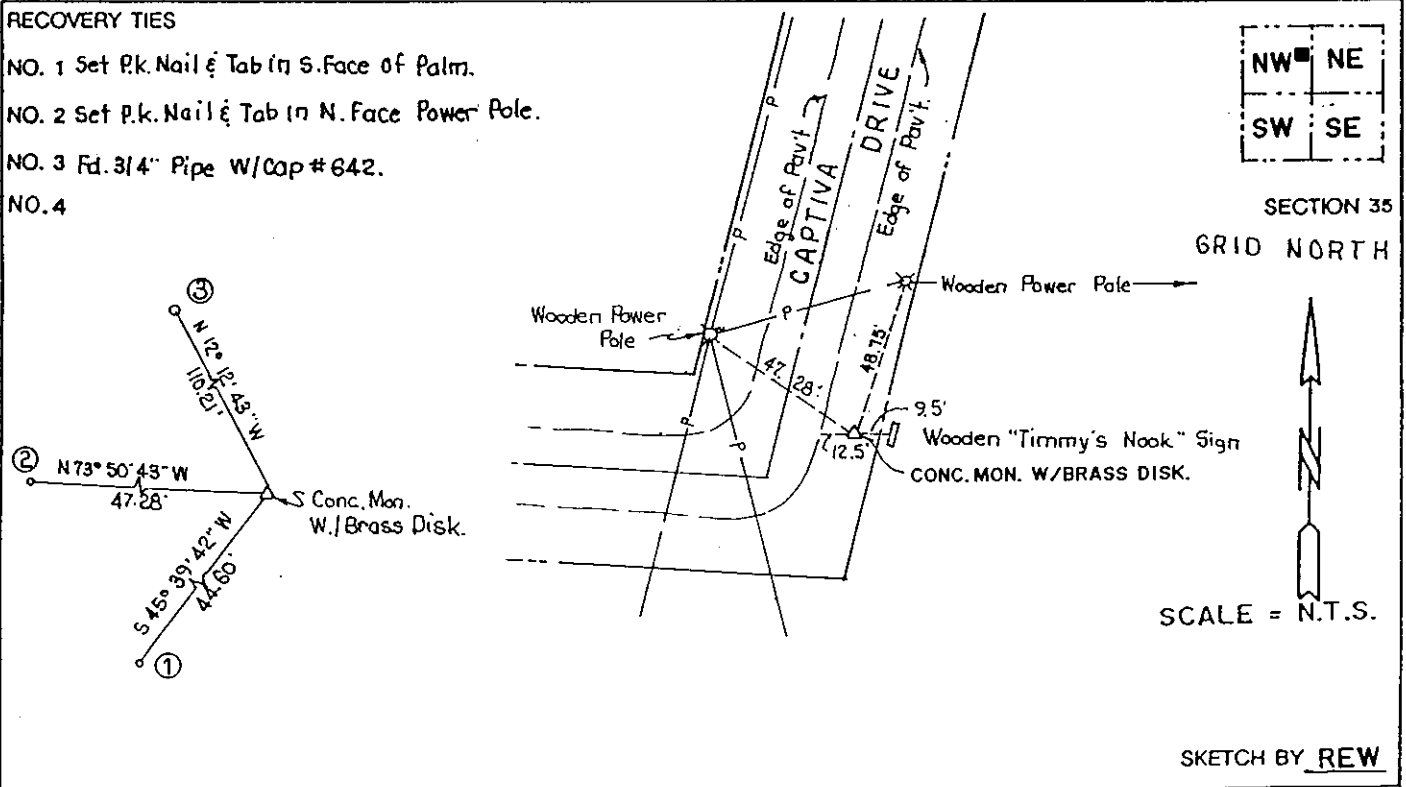
NORTHING (Y) 793785.607 NORTHING (Y) 793955.458

EASTING (X) 437704.190 EASTING (X) 593934.638

GRID FLORIDA TRANSVERSE MERCATOR RECOVERED BY _____

ZONE WEST DATE, CONDITION _____

FIELD BOOK 2029 PAGE 70



JOHNSON ENGINEERING, INC.
CIVIL ENGINEERS - LAND SURVEYORS
2158 JOHNSON STREET, POST OFFICE BOX 1550, FORT MYERS, FLORIDA, 33902-1550
PHONE (813) 334-0046

453