

## LEE COUNTY SURVEY MARK DESCRIPTION

DESIGNATION 2430 COUNTY LEE STATE FLORIDA  
 LOCATED IN SEC 35 TWP 45S RGE 23E USGS QUAD MAP FORT MYERS SW

TO REACH SURVEY MARK:  
 FROM MC GREGOR BLVD, RUN WESTERLY ALONG IONA ROAD 1.7 mi. ± TO  
 JOHN MORRIS ROAD; THENCE RUN NORTH ALONG JOHN MORRIS ROAD 0.25 mi. ±  
 TO RIVER-BY ROAD; THENCE RUN ALONG RIVER-BY ROAD TO END.

TYPE OF SET 6" ROUND CONCRETE MONUMENT W/ 3" LEE COUNTY  
 MARK PUBLIC WORKS ALUM. DISK DATE SET JUNE 17 19 98

HORIZONTAL CONTROL ORIGINATED ON 2<sup>ND</sup> 1<sup>ST</sup> ORDER CONTROL BY \_\_\_\_\_  
 ON 1927 DATUM. ON 1983 (1990 GPS ADJUSTMENT) DATUM.

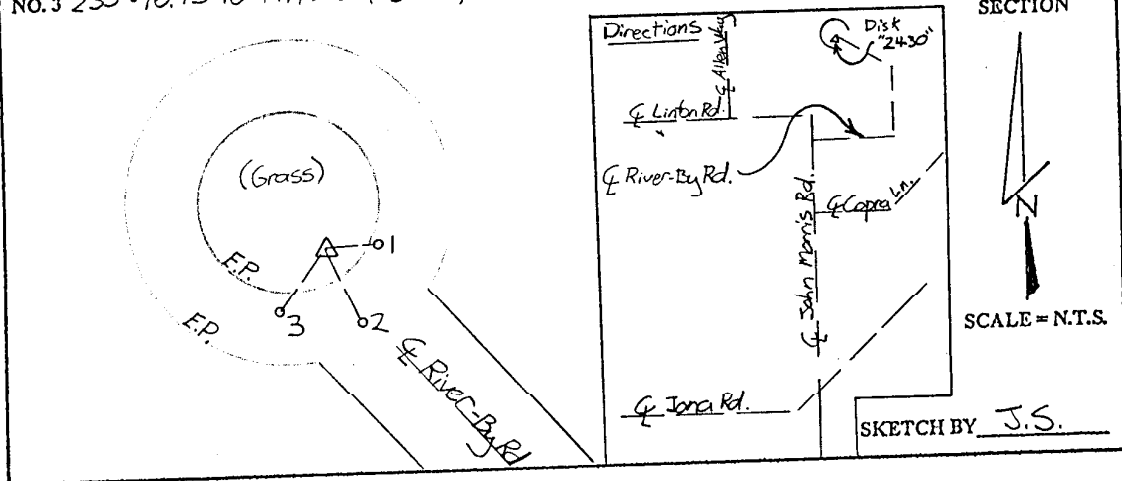
COORDINATES (FT.) 2<sup>ND</sup> ORDER COORDINATES (FT.) 2<sup>ND</sup> ORDER  
 NORTHING (Y) \_\_\_\_\_ NORTHING (Y) 794114.78  
 EASTING (X) \_\_\_\_\_ EASTING (X) 666456.06

GRID FLORIDA TRANSVERSE MERCATOR RECOVERED BY \_\_\_\_\_  
 ZONE WEST DATE CONDITION \_\_\_\_\_

FIELD BOOK BWL #2 PAGE 4, 17

**RECOVERY TIES**

- NO. 1 80°-12.47' to PK: Disk (LB4919)
- NO. 2 171°-10.64' to PK: Disk (LB4919)
- NO. 3 235°-16.43' to PK: Disk (LB4919)



**JOHNSON ENGINEERING, INC.**

CIVIL ENGINEERS - LAND SURVEYORS

2158 JOHNSON STREET, POST OFFICE BOX 1550, FORT MYERS, FLORIDA, 33902-1550

PHONE: 941-334-0046