

# LEE COUNTY SURVEY MARK DESCRIPTION

1354

DESIGNATION 4018 COUNTY LEE STATE FL.  
 LOCATED IN SEC 28 TWP 43 S. RGE 27 E. USGS QUAD MAP ALVA  
 TO REACH SURVEY MARK:

TYPE OF 3 1/4" ALUMINUM LEE COUNTY SURVEY CONTROL MARK SET IN CONCRETE

MARK 4018

DATE SET APRIL 3 1998

HORIZONTAL CONTROL ORIGINATED ON 2<sup>nd</sup>/1<sup>st</sup> ORDER CONTROL BY NATIONAL GEODETIC SURVEY (NGS)

ON 1927 DATUM.

ON 1983 (1990 GPS Adjustment) DATUM.

COORDINATES (FT), 2<sup>nd</sup> ORDER

COORDINATES (FT), 2<sup>nd</sup> ORDER

NORTHING (M) N/A

NORTHING (M) 865727.0143

EASTING (M) N/A

EASTING (M) 780024.7940

GRID FLORIDA TRANSVERSE MERCATOR

RECOVERED BY \_\_\_\_\_

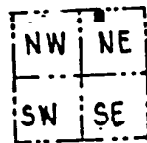
ZONE WEST

DATE, CONDITION \_\_\_\_\_

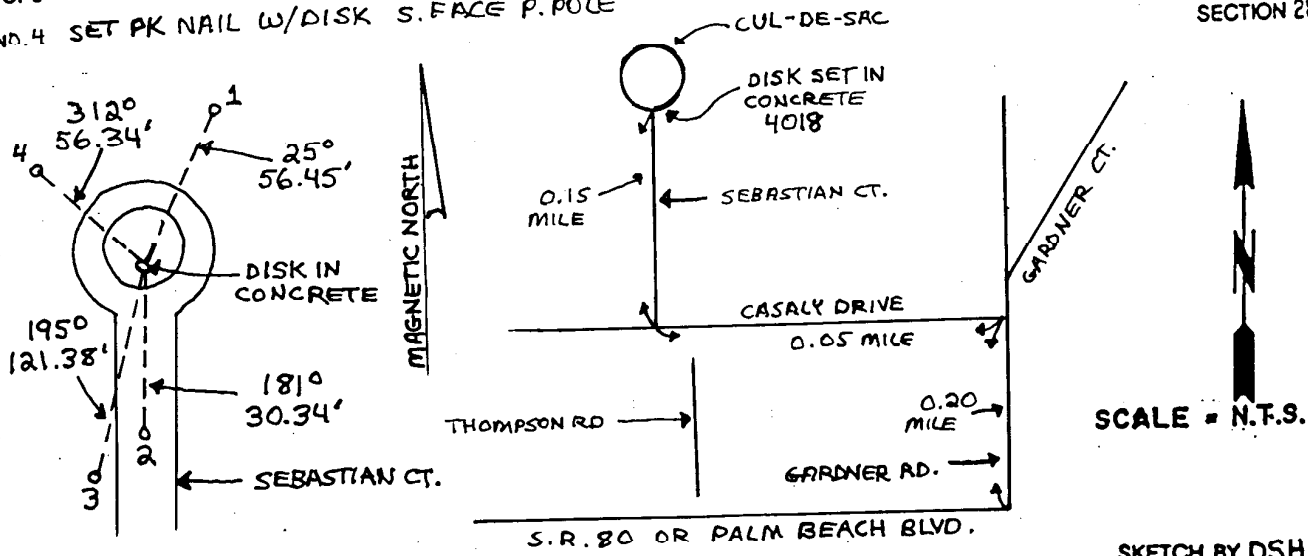
FIELD BOOK JE1 # 1 PAGE 7

**RECOVERY TIES**

- NO. 1 SET PK NAIL W/DISK E. FACE P. POLE
- NO. 2 END NAIL W/DISK STARNES & ASSOC. INC.
- NO. 3 SET PK NAIL W/DISK E. FACE P. POLE
- NO. 4 SET PK NAIL W/DISK S. FACE P. POLE



SECTION 28



SCALE = N.T.S.

SKETCH BY DSH

**JOHNSON ENGINEERING, INC.**  
 CIVIL ENGINEERS - LAND SURVEYORS  
 2158 JOHNSON STREET, POST OFFICE BOX 1550, FORT MYERS, FLORIDA, 33902-1550  
 PHONE 19411 334-0046