

LEE COUNTY SURVEY MARK DESCRIPTION

DESIGNATION 2290 COUNTY LEE STATE FLORIDA
 LOCATED IN SEC 30 TWP 43S RGE 22E USCS QUAD MAP BOKEELIA

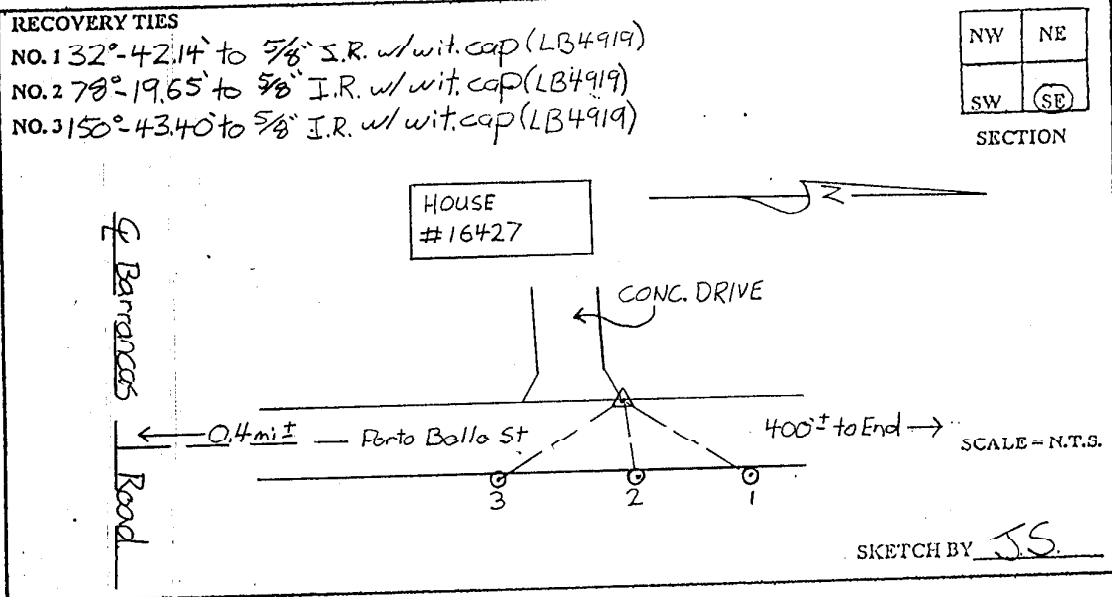
TO REACH SURVEY MARK:
 FROM PINE ISLAND CENTER, RUN NORTH ALONG STRINGFELLOW ROAD
 6.0 mi. ± TO BARRANCAS ROAD, THENCE RUN EAST ALONG BARRANCAS ROAD
 TO PORTO BELLO STREET; THENCE RUN NORTH ALONG PORTO BELLO ST. 0.4 mi. ±
 TO HOUSE # 16427 AND MARK.

TYPE OF SET 3" LEE COUNTY PUBLIC WORKS DISK IN PAVEMENT
 MARK _____ DATE SET APRIL 20 19 98

HORIZONTAL CONTROL ORIGINATED ON 2004 ± ORDER CONTROL BY _____
 ON 1927 DATUM. ON 1983 (1990 GPS ADJUSTMENT) DATUM.

COORDINATES (FT.) ~~2004~~ ORDER _____ COORDINATES (FT.) ~~2004~~ ORDER _____
 NORTHING (Y) _____ NORTHING (X) 859976.12
 EASTING (X) _____ EASTING (X) 607644.79

GRID FLORIDA TRANSVERSE MERCATOR RECOVERED BY _____
 ZONE WEST DATE CONDITION _____
 FIELD BOOK BWL #2 PAGE 8



JOHNSON ENGINEERING, INC.

CIVIL ENGINEERS - LAND SURVEYORS

2158 JOHNSON STREET, POST OFFICE BOX 1550, FORT MYERS, FLORIDA, 33902-1550

PHONE: 941-334-0046