

## LEE COUNTY SURVEY MARK DESCRIPTION

DESIGNATION 2423 COUNTY LEE STATE FLORIDA  
 LOCATED IN SEC 20 TWP 45S RGE 24E USGS QUAD MAP FORT MYERS SW

TO REACH SURVEY MARK:  
 FROM GLADIOLUS DR. RUN NORTH EASTERLY ON MCGREGOR BLVD 1 mi. ± TO  
 GRIFFEN BLVD. S.W.; THENCE RUN NORTH ALONG GRIFFEN BLVD. 0.8 mi. ±  
 TO SCHULTZ ROAD S.W.; THENCE RUN WEST ALONG SCHULTZ ROAD S.W.  
 0.25 mi. ± TO MARK.

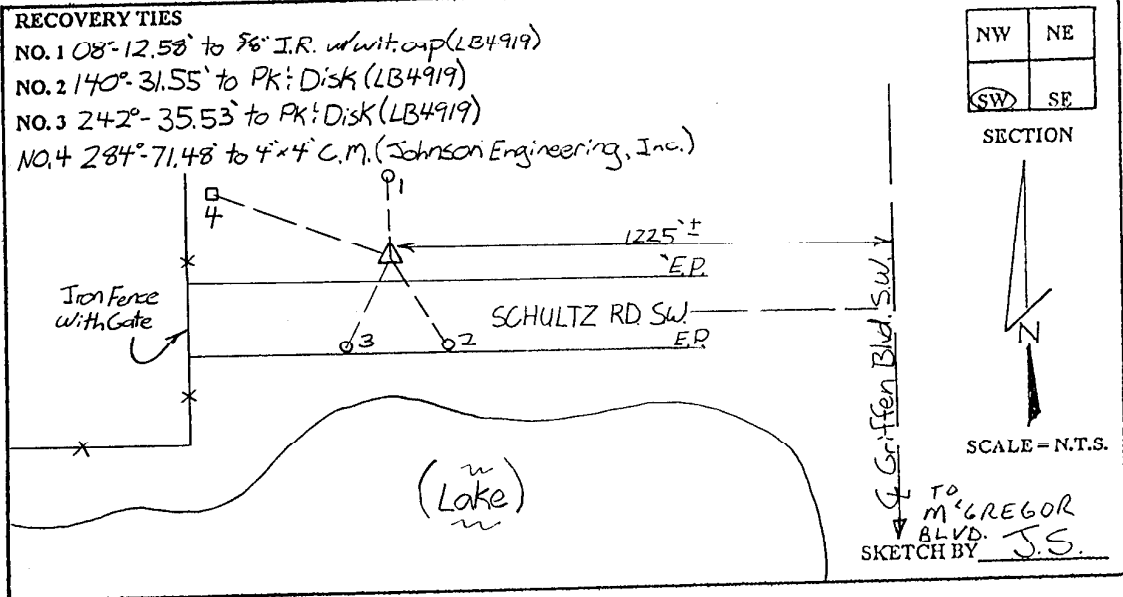
TYPE OF SET 6" ROUND CONCRETE MONUMENT W/ 3" LEE COUNTY  
 MARK PUBLIC WORKS DISK DATE SET JUNE 17 19 98

HORIZONTAL CONTROL ORIGINATED ON 2ND-1ST ORDER CONTROL BY \_\_\_\_\_  
 ON 1927 DATUM. ON 1983 (1990 GPS ADJUSTMENT) DATUM.

COORDINATES (FT.) 2ND ORDER COORDINATES (FT.) 2ND ORDER  
 NORTHING (Y) \_\_\_\_\_ NORTHING (Y) 801301.16  
 EASTING (X) \_\_\_\_\_ EASTING (X) 677148.28

GRID FLORIDA TRANSVERSE MERCATOR RECOVERED BY \_\_\_\_\_  
 ZONE WEST DATE CONDITION \_\_\_\_\_

FIELD BOOK BWL #1 PAGE 47



**JOHNSON ENGINEERING, INC.**

CIVIL ENGINEERS - LAND SURVEYORS

2158 JOHNSON STREET, POST OFFICE BOX 1550, FORT MYERS, FLORIDA, 33902-1550

PHONE: 941-334-0046