

LEE COUNTY  
SURVEY MARK DESCRIPTION

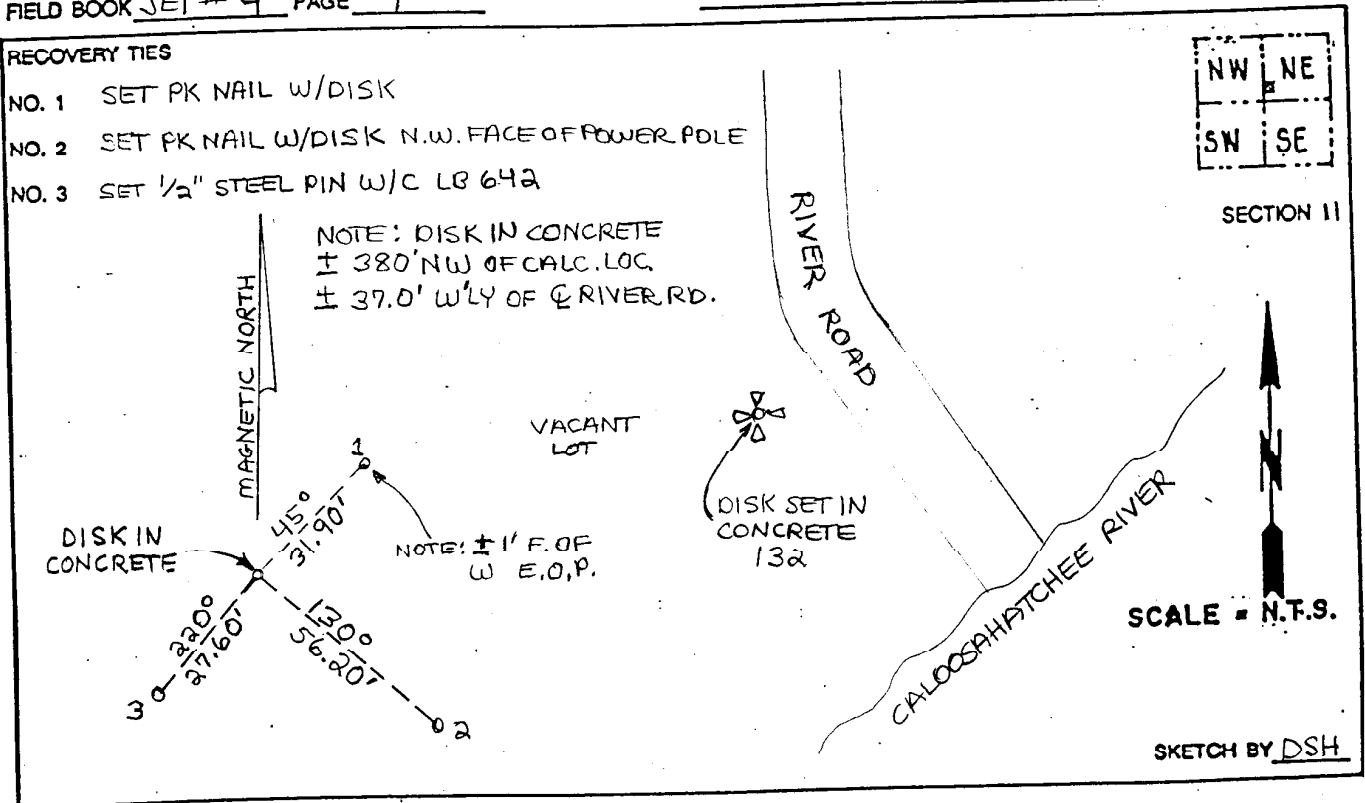
1312

DESIGNATION 132 COUNTY LEC STATE FL.  
 LOCATED IN SEC 11 TWP 44 S. RGE 24 E. USGS QUAD MAP FORT MYERS NW  
 TO REACH SURVEY MARK:

TYPE OF 3 1/4" ALUMINUM LEE COUNTY SURVEY CONTROL MARK SET IN CONCRETE  
 MARK 132 DATE SET APRIL 3 1998  
 HORIZONTAL CONTROL ORIGINATED ON 2<sup>nd</sup>/1<sup>st</sup> ORDER CONTROL BY NATIONAL GEODETIC SURVEY (NGS)  
 ON 1927 DATUM. ON 1983 (1990 GPS Adjustment) DATUM.  
 COORDINATES (FT), 2<sup>nd</sup> ORDER COORDINATES (FT), 2<sup>nd</sup> ORDER  
 NORTHING (M) N/A NORTHING (M) 846597.8951  
 EASTING (M) N/A EASTING (M) 694555.0095  
 GRID FLORIDA TRANSVERSE MERCATOR RECOVERED BY \_\_\_\_\_  
 ZONE WEST DATE, CONDITION \_\_\_\_\_  
 FIELD BOOK JEI # 4 PAGE 1

RECOVERY TIES

- NO. 1 SET PK NAIL W/DISK
- NO. 2 SET PK NAIL W/DISK N.W. FACE OF POWER POLE
- NO. 3 SET 1/2" STEEL PIN W/C LB 642



JOHNSON ENGINEERING, INC.  
 CIVIL ENGINEERS - LAND SURVEYORS  
 2158 JOHNSON STREET, POST OFFICE BOX 1550, FORT MYERS, FLORIDA, 33902-1550  
 PHONE (941) 334-0046