

LEE COUNTY SURVEY MARK DESCRIPTION

DESIGNATION 44 COUNTY LEE STATE FLORIDA

LOCATED IN SEC 4 TWP 48 S. RGE 25 E. USGS QUAD MAP BONITA SPRINGS

TO REACH SURVEY MARK:
FROM NEW 41 RUN WEST ALONG BONITA BEACH ROAD TO WINDSOR ROAD; THENCE SOUTH ALONG WINDSOR ROAD FOR 1 MILE ± TO WOODS EDGE PARKWAY; THENCE EAST ALONG WOODS EDGE PARKWAY FOR 1600 FEET ± TO MARK.

TYPE OF SET 6" ROUND CONCRETE MONUMENT W/ 3" LEE COUNTY
MARK PUBLIC WORKS ALUM. DISK DATE SET JUNE 26 19 98

HORIZONTAL CONTROL ORIGINATED ON 2ND TTST ORDER CONTROL BY _____
ON _____ 1927 DATUM. ON 1983 (1990 GPS ADJUSTMENT) DATUM.

COORDINATES (FT.) ~~200~~ ORDER _____ COORDINATES (FT.) ~~200~~ ORDER _____
NORTHING (Y) _____ NORTHING (Y) 720730.094
EASTING (X) _____ EASTING (X) 717043.546

GRID FLORIDA TRANSVERSE MERCATOR RECOVERED BY _____

ZONE WEST DATE CONDITION _____

FIELD BOOK BWL #4 PAGE 18

RECOVERY TIES

- NO. 1 154°-34.62' to PK 1/2 Disk (LB4919)
- NO. 2 210°-33.50' to PK 1/2 Disk (LB4919)
- NO. 3 4°-17.51' to 5/8" I.R. w/ wit. cap (LB4919)

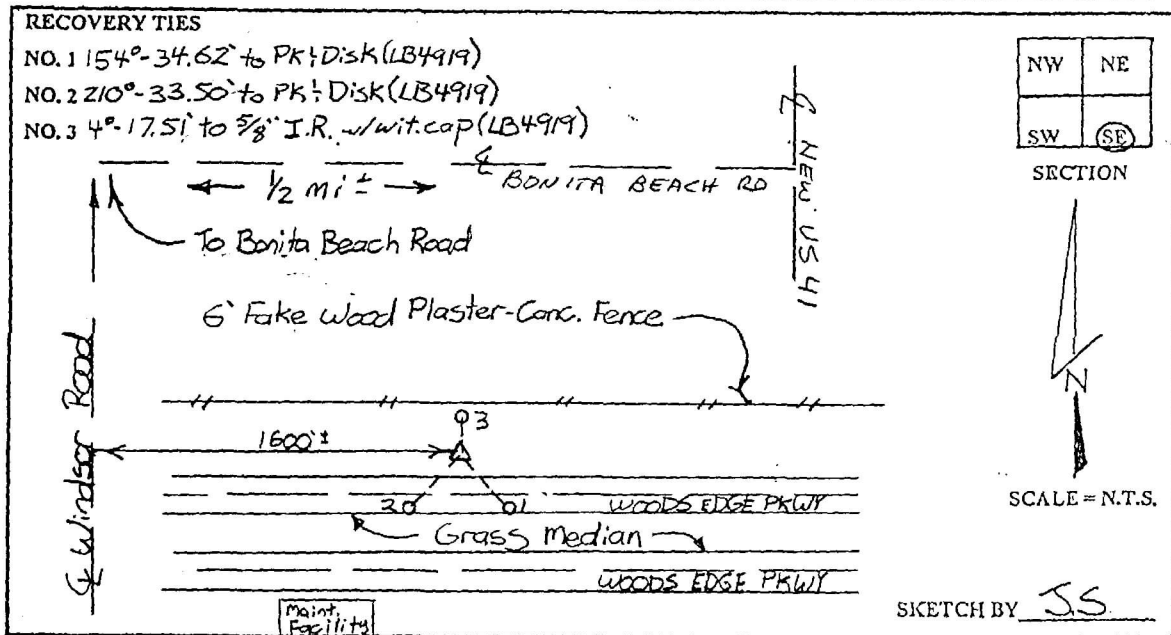
NW	NE
SW	SE

SECTION



SCALE = N.T.S.

SKETCH BY JS



JOHNSON ENGINEERING, INC.

CIVIL ENGINEERS - LAND SURVEYORS

2158 JOHNSON STREET, POST OFFICE BOX 1550, FORT MYERS, FLORIDA, 33902-1550

PHONE: 941-334-0046