

LEE COUNTY SURVEY MARK DESCRIPTION

DESIGNATION 52 COUNTY LEE STATE FLORIDA

LOCATED IN SEC 30 TWP 47S RGE 25E USGS QUAD MAP BONITA SPRINGS

TO REACH SURVEY MARK:

FROM NEW 41, RUN WEST ALONG BONITA BEACH ROAD TURNING NORTHERLY ONTO HICKORY BLVD AND CONTINUE APPROXIMATELY 1 MILE TO M^c LAUGHLIN BLVD. (MARK IS FOUND AT 26977 M^c LAUGHLIN). (SEE SKETCH BELOW)

TYPE OF SET 6" ROUND CONCRETE MONUMENT w/ 3" LEE COUNTY PUBLIC MARK WORKS ALUM. DISK DATE SET JUNE 10 1998

HORIZONTAL CONTROL ORIGINATED ON 2ND 11TH ORDER CONTROL BY _____

ON 1927 DATUM ON 1983 (1990 GPS ADJUSTMENT) DATUM.

COORDINATES (FT.) ~~731564.118~~ ORDER

COORDINATES (FT.) ~~731564.118~~ ORDER

NORTHING (Y) _____

NORTHING (Y) 731564.118

EASTING (X) _____

EASTING (X) 705207.617

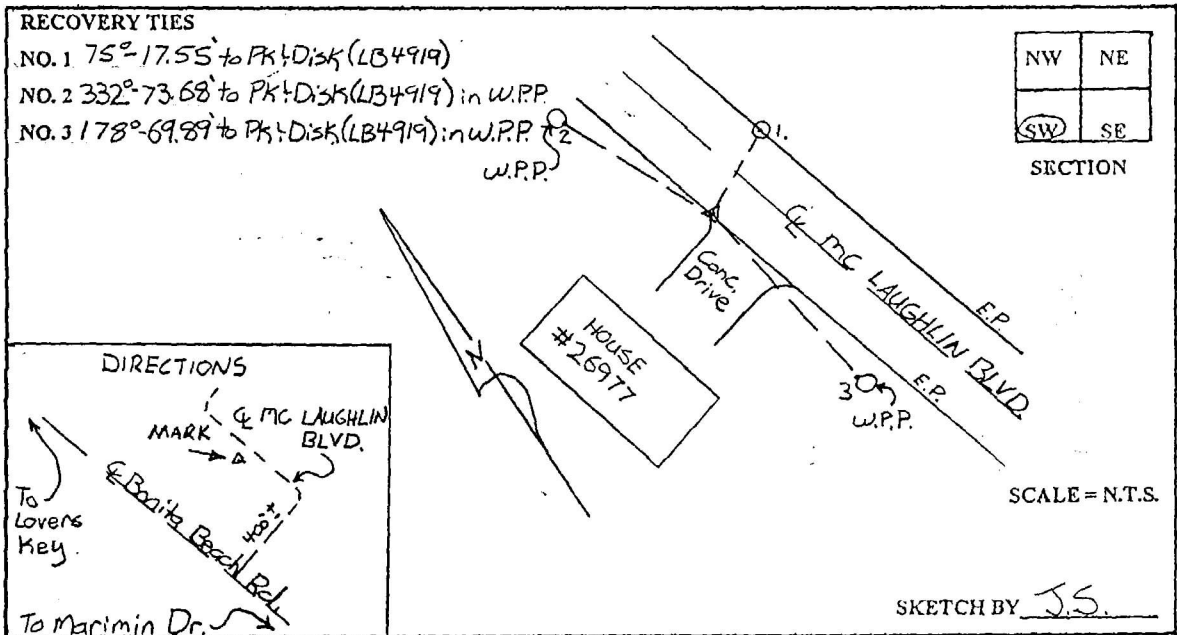
GRID FLORIDA TRANSVERSE MERCATOR

RECOVERED BY _____

ZONE WEST

DATE CONDITION _____

FIELD BOOK BWL #4 PAGE 3



JOHNSON ENGINEERING, INC.

CIVIL ENGINEERS - LAND SURVEYORS

2158 JOHNSON STREET, POST OFFICE BOX 1550, FORT MYERS, FLORIDA, 33902-1550

PHONE: 941-334-0046