

# LEE COUNTY SURVEY MARK DESCRIPTION

DESIGNATION 166 COUNTY LEE STATE FLORIDA

LOCATED IN SEC 25 TWP 46S RGE 25E USGS QUAD MAP ESTERO

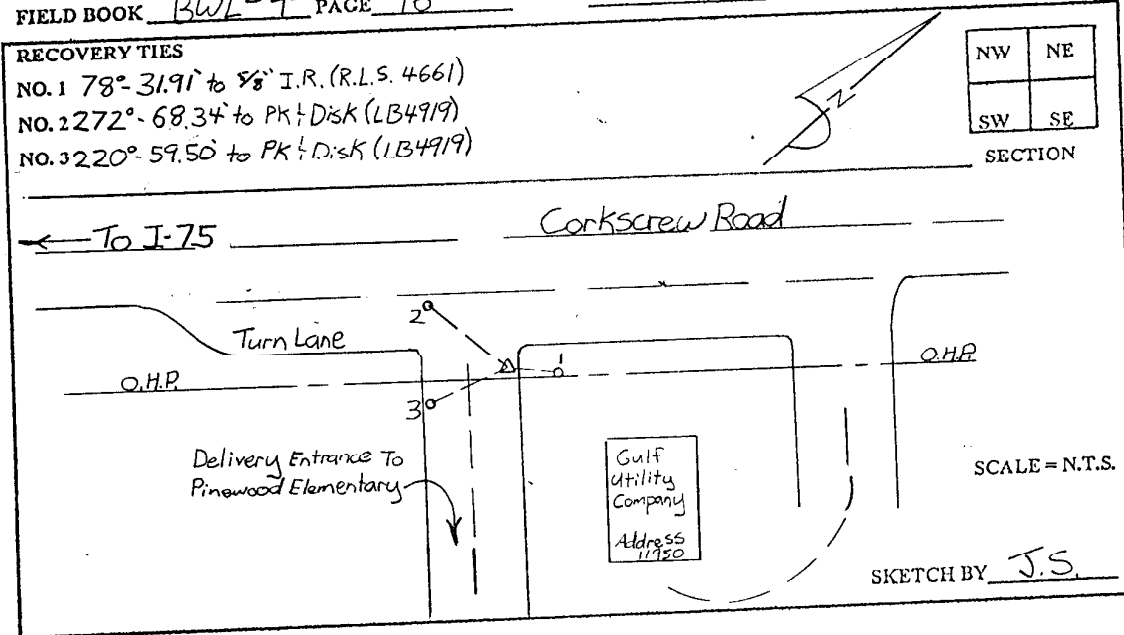
TO REACH SURVEY MARK:  
FROM I-75, RUN EASTERLY FROM EXIT 19 ALONG CORKSCREW ROAD 1.4 mi. ±  
TO AN ASPHALT ROAD USED FOR SERVICE VEHICLES TO PINEWOOD ELEMENTARY.

TYPE OF SET 3" LEE COUNTY PUBLIC WORKS ALUM. DISK  
MARK \_\_\_\_\_ DATE SET JUNE 25 19 98

HORIZONTAL CONTROL ORIGINATED ON 2ND ORDER CONTROL BY \_\_\_\_\_  
ON 1927 DATUM. ON 1983 (1990 GPS ADJUSTMENT) DATUM.

COORDINATES (FT) 2ND ORDER  
NORTHING (Y) \_\_\_\_\_  
EASTING (X) \_\_\_\_\_  
COORDINATES (FT) 2ND ORDER  
NORTHING (Y) 766436.99  
EASTING (X) 735483.20

GRID FLORIDA TRANSVERSE MERCATOR  
ZONE WEST  
FIELD BOOK BWL #4 PAGE 16  
RECOVERED BY \_\_\_\_\_  
DATE CONDITION \_\_\_\_\_



## JOHNSON ENGINEERING, INC.

CIVIL ENGINEERS - LAND SURVEYORS

2158 JOHNSON STREET, POST OFFICE BOX 1550, FORT MYERS, FLORIDA, 33902-1550

PHONE: 941-334-0046