

LEE COUNTY SURVEY MARK DESCRIPTION

DESIGNATION 38 COUNTY LEE STATE FLORIDA

LOCATED IN SEC 2 TWP 48S RGE 25E USGS QUAD MAP BONITA SPRINGS

TO REACH SURVEY MARK:

FROM OLD US 41 RUN EAST ALONG BONITA BEACH ROAD FOR 1/4 MILE ± TO RACETRACK ROAD; THENCE SOUTH 4600' ± TO MARK.

TYPE OF Set 6" Round Concrete Monument w/ 3" Lee County Public
MARK works Alum. Disk DATE SET June 29 19 98

HORIZONTAL CONTROL ORIGINATED ON 2ND 1ST ORDER CONTROL BY _____
ON 1927 DATUM. ON 1983 (1990 GPS ADJUSTMENT) DATUM.

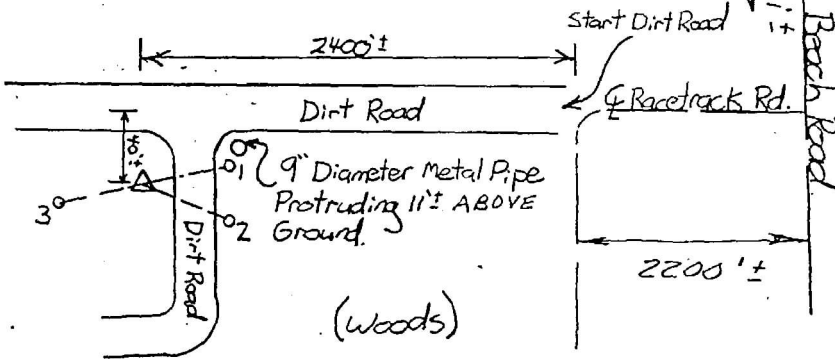
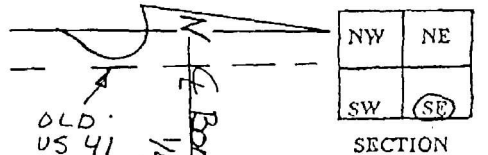
COORDINATES (FT.) 2000 ORDER _____ COORDINATES (FT.) 2000 ORDER _____
NORTHING (Y) _____ NORTHING (Y) 721355.002
EASTING (X) _____ EASTING (X) 730126.468

GRID FLORIDA TRANSVERSE MERCATOR RECOVERED BY _____
ZONE WEST DATE CONDITION _____

FIELD BOOK BWL #4 PAGE 19

RECOVERY TIES

- NO. 1 322°-22.68' to 5/8" I.R. w/ wit. cap (LB4919)
- NO. 2 42°-35.78' to 5/8" I.R. w/ wit. cap (LB4919)
- NO. 3 150°-17.97' to 5/8" I.R. w/ wit. cap (LB4919)



SCALE = N.T.S.

SKETCH BY J.S.

JOHNSON ENGINEERING, INC.

CIVIL ENGINEERS - LAND SURVEYORS

2158 JOHNSON STREET, POST OFFICE BOX 1550, FORT MYERS, FLORIDA, 33902-1550

PHONE: 941-334-0046