

LEE COUNTY SURVEY MARK DESCRIPTION

DESIGNATION 00 COUNTY LEE STATE FLORIDA
 LOCATED IN SEC _____ TWP 46 S. RGE 27 E USCS QUAD MAP CORKSCREW

TO REACH SURVEY MARK:
 FROM I-75 RUN EAST ALONG CORKSCREW ROAD
 TO COUNTY LINE; THENCE SOUTH 1 MILE ± TO MARK.

TYPE OF SET 6" ROUND CONCRETE MONUMENT W/ 3" LEE
 MARK COUNTY PUBLIC WORKS ALUM. DISK, DATE SET JUNE 25 1998

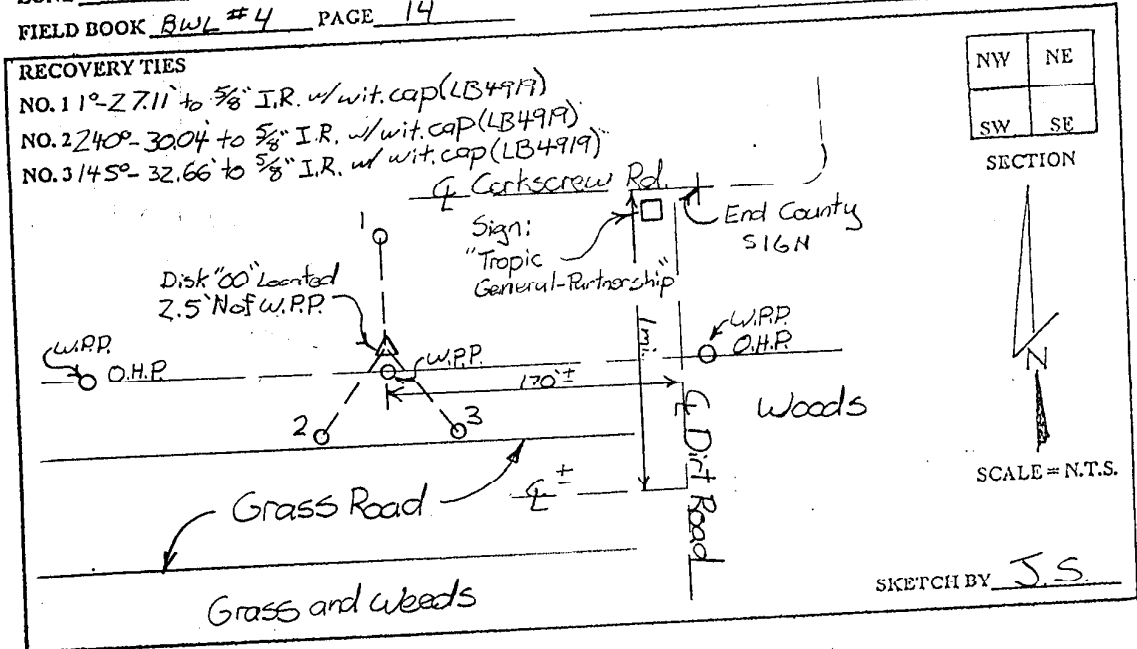
HORIZONTAL CONTROL ORIGINATED ON 2ND 1ST ORDER CONTROL BY _____
 ON 1927 DATUM. ON 1983 (1970 GPS ADJUSTMENT) DATUM.

COORDINATES (FT). 3RD ORDER
 NORTHING (Y) _____
 EASTING (X) _____

COORDINATES (FT) 3RD ORDER
 NORTHING (Y) 764683.482
 EASTING (X) 799039.073

GRID FLORIDA TRANSVERSE MERCATOR
 ZONE WEST
 FIELD BOOK BWL #4 PAGE 14

RECOVERED BY _____
 DATE CONDITION _____



JOHNSON ENGINEERING, INC.

CIVIL ENGINEERS - LAND SURVEYORS

2158 JOHNSON STREET, POST OFFICE BOX 1550, FORT MYERS, FLORIDA, 33902-1550

PHONE: 941-334-0046