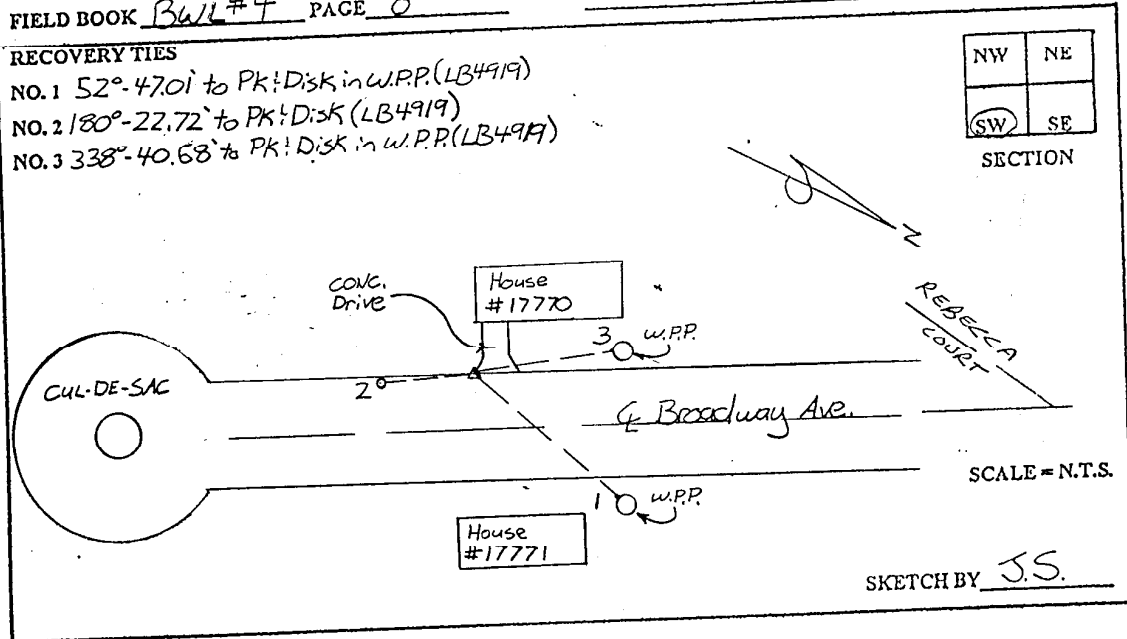


## LEE COUNTY SURVEY MARK DESCRIPTION

DESIGNATION 256 COUNTY LEE STATE FLORIDA  
 LOCATED IN SEC 7 TWP 46S RGE 24E USGS QUAD MAP FORT MYERS BEACH  
 TO REACH SURVEY MARK:  
 FROM SUMMERLIN ROAD, RUN SOUTH ALONG SAN CARLOS BLVD. 0.6 mi. TO  
 BROADWAY AVE., THENCE RUN SOUTH EASTERLY ALONG BROADWAY AVE TO  
 THE INTERSECTION OF REBECCA CT., THENCE CONTINUE ALONG BROADWAY  
 AVE. HEADING SOUTHERLY TO HOUSE #1770.  
 TYPE OF SET 6" CONCRETE MONUMENT W/ 3" LEE COUNTY PUBLIC WORKS  
 MARK ALUM. DISK DATE SET JUNE 16 1998  
 HORIZONTAL CONTROL ORIGINATED ON 2ND ORDER CONTROL BY \_\_\_\_\_  
 ON 1927 DATUM. ON 1983 (1990 GPS ADJUSTMENT) DATUM.  
 COORDINATES (FT.) 2ND ORDER  
 NORTHING (Y) \_\_\_\_\_  
 EASTING (X) \_\_\_\_\_  
 GRID FLORIDA TRANSVERSE MERCATOR  
 ZONE WEST  
 FIELD BOOK BWL #4 PAGE 8  
 RECOVERED BY \_\_\_\_\_  
 DATE CONDITION \_\_\_\_\_



**JOHNSON ENGINEERING, INC.**

CIVIL ENGINEERS - LAND SURVEYORS

2158 JOHNSON STREET, POST OFFICE BOX 1550, FORT MYERS, FLORIDA, 33902-1550

PHONE: 941-334-0046