

LEE COUNTY SURVEY MARK DESCRIPTION

DESIGNATION 2285 COUNTY LEE STATE FLORIDA
 LOCATED IN SEC 17 TWP 44S RGE 22E USGS QUAD MAP BOKEELIA

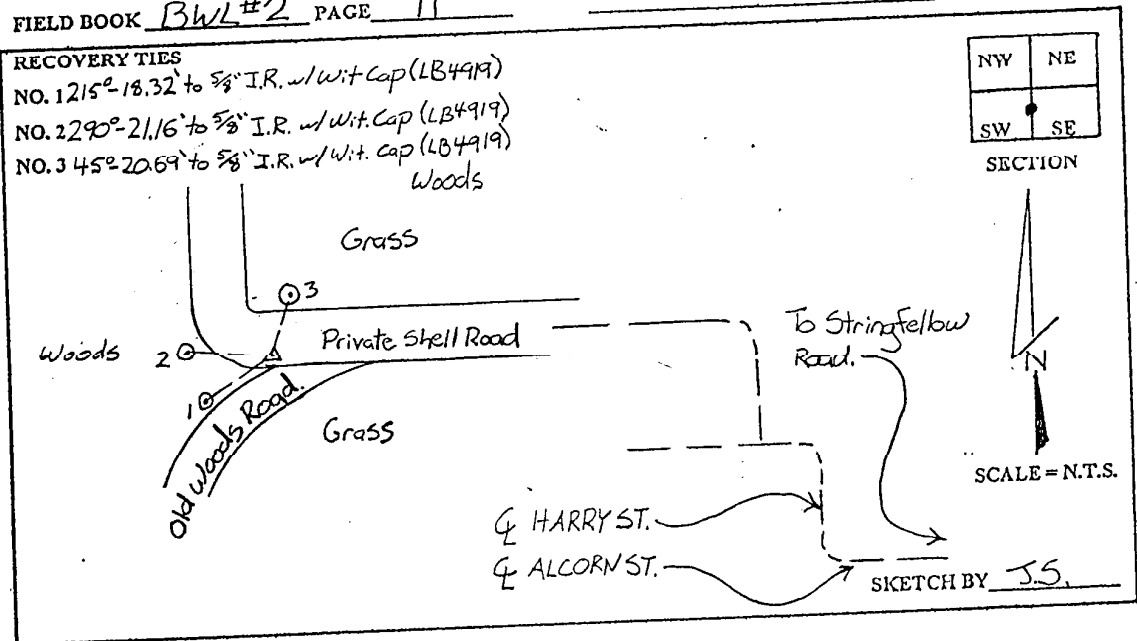
TO REACH SURVEY MARK:
 FROM PINE ISLAND CENTER, RUN NORTHERLY ALONG STRINGFELLOW ROAD 1.6 mi.± TO ALCORN ST., THENCE RUN WEST ALONG ALCORN ST TO HARRY ST.; THENCE RUN NORTH ALONG HARRY ST TO A PRIVATE SHELL ROAD; THENCE RUN NORTH AND WESTERLY ALONG THE SHELL ROAD TO DISK "2285"

TYPE OF SET 6" ROUND CONCRETE MONUMENT W/ 3" LEE COUNTY
 MARK PUBLIC WORKS DISK DATE SET APRIL 4 1998

HORIZONTAL CONTROL ORIGINATED ON 2ND 1ST ORDER CONTROL BY _____
 ON 1927 DATUM. ON 1983 (1990 GPS ADJUSTMENT) DATUM.

COORDINATES (FT.) 3RD ORDER
 NORTHING (Y) _____
 EASTING (X) _____
 COORDINATES (FT.) 3RD ORDER
 NORTHING (Y) 839030.22
 EASTING (X) 612653.09

GRID FLORIDA TRANSVERSE MERCATOR RECOVERED BY _____
 ZONE WEST DATE CONDITION _____
 FIELD BOOK BWL #2 PAGE 11



JOHNSON ENGINEERING, INC.

CIVIL ENGINEERS - LAND SURVEYORS

2158 JOHNSON STREET, POST OFFICE BOX 1550, FORT MYERS, FLORIDA, 33902-1550

PHONE: 941-334-0046