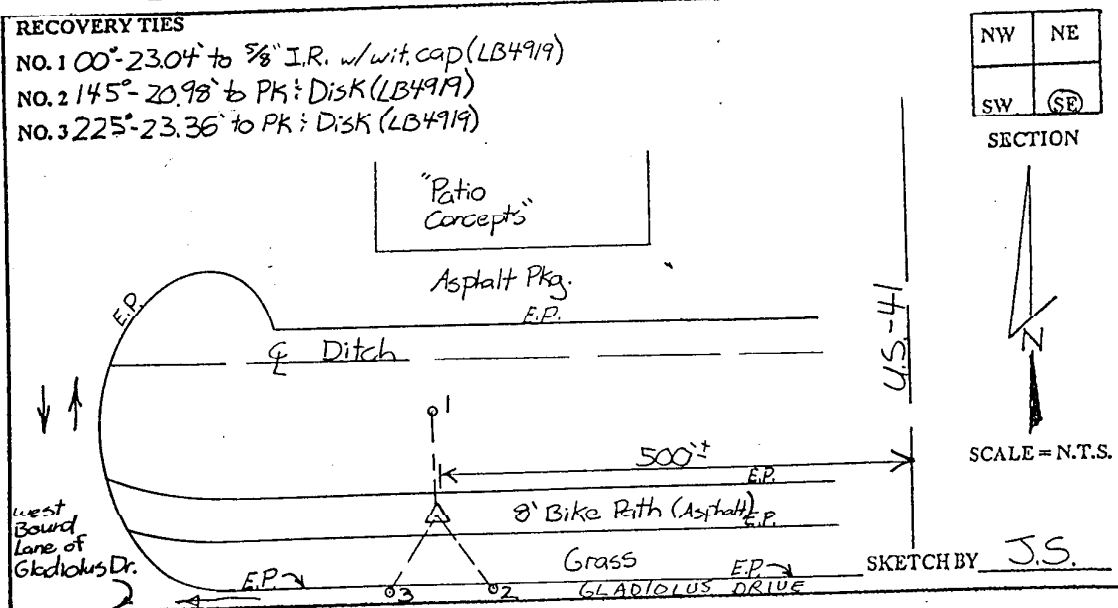


LEE COUNTY SURVEY MARK DESCRIPTION

DESIGNATION 2382 COUNTY LEE STATE FLORIDA
 LOCATED IN SEC 26 TWP 45S RGE 24E USGS QUAD MAP FORT MYERS SE

TO REACH SURVEY MARK:
 FROM U.S.-41; RUN WEST ON GLADIOLUS DRIVE 500'± TO
 MARK, LOCATED NORTH OF GLADIOLUS ON AN 8' BIKE PATH.

TYPE OF SET 3" LEE COUNTY PUBLIC WORKS ALUM. DISK IN
 MARK PAVEMENT DATE SET JUNE 17 19 98
 HORIZONTAL CONTROL ORIGINATED ON 2ND 1ST ORDER CONTROL BY _____
 ON 1927 DATUM ON 1983 (1990 GPS ADJUSTMENT) DATUM.
 COORDINATES (FT.) 2ND ORDER
 NORTHING (Y) _____
 EASTING (X) _____
 GRID FLORIDA TRANSVERSE MERCATOR RECOVERED BY _____
 ZONE WEST DATE CONDITION _____
 FIELD BOOK BWL #1 PAGE 29



JOHNSON ENGINEERING, INC.

CIVIL ENGINEERS - LAND SURVEYORS

2158 JOHNSON STREET, POST OFFICE BOX 1550, FORT MYERS, FLORIDA, 33902-1550

PHONE: 941-334-0046