

## LEE COUNTY SURVEY MARK DESCRIPTION

DESIGNATION 310 COUNTY LEE STATE FLORIDA  
 LOCATED IN SEC 2 TWP 46S RGE 22E USGS QUAD MAP SANIBEL

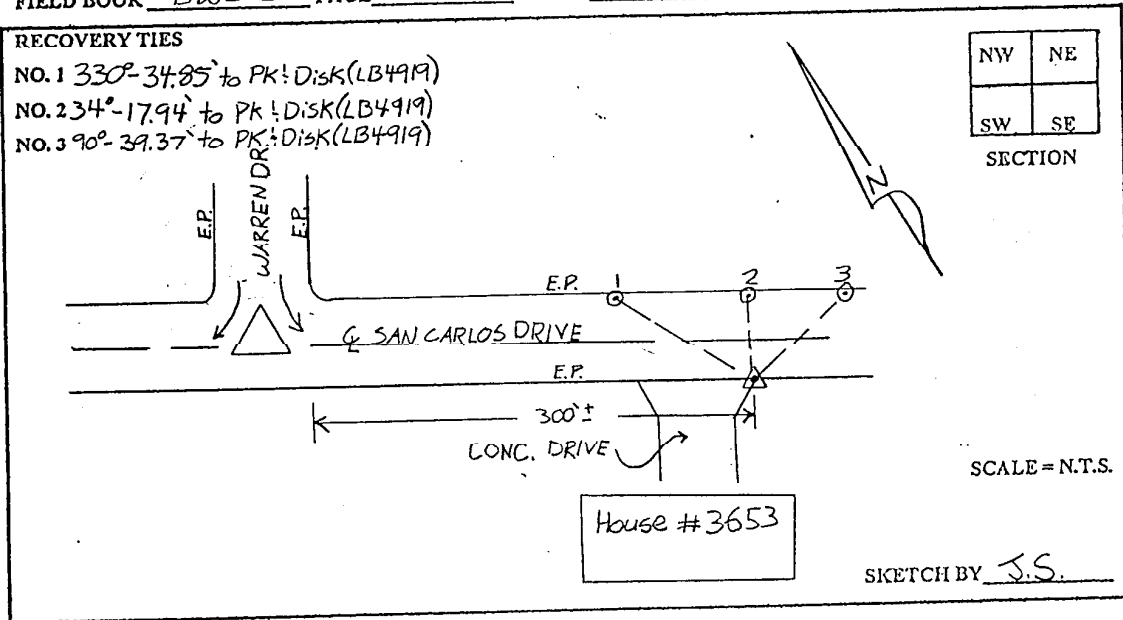
TO REACH SURVEY MARK:  
 FROM PINE ISLAND CENTER; RUN SOUTH ON STRINGFELLOW ROAD FOR APPROXIMATELY 7 MILES TO SANIBEL BLVD (LOCATED 1/8 MILE ± SOUTH OF SMALL BRIDGE); TURN RIGHT ON SANIBEL BLVD AND CONTINUE 1/2 MILE ±; TURN LEFT ON BAYVIEW AND THEN RIGHT ON WARREN DRIVE AND CONTINUE SOUTH TO SAN CARLOS DRIVE AND MARK.

TYPE OF SET 3" LEE COUNTY PUBLIC WORKS ALUM. DISK AT CORNER  
 MARK OF CONCRETE DRIVE AND EOP DATE SET MAY 4 1998

HORIZONTAL CONTROL ORIGINATED ON NOV 11 1977 ORDER CONTROL BY \_\_\_\_\_  
 ON 1927 DATUM ON 1983 (1990 GPS ADJUSTMENT) DATUM.

COORDINATES (FT.) NAD 83 ORDER \_\_\_\_\_ COORDINATES (FT.) NAD 83 ORDER \_\_\_\_\_  
 NORTHING (Y) \_\_\_\_\_ NORTHING (N) 784186.13  
 EASTING (X) \_\_\_\_\_ EASTING (E) 628624.91

GRID FLORIDA TRANSVERSE MERCATOR RECOVERED BY \_\_\_\_\_  
 ZONE WEST DATE CONDITION \_\_\_\_\_  
 FIELD BOOK BWL 2 PAGE 13



**JOHNSON ENGINEERING, INC.**

CIVIL ENGINEERS - LAND SURVEYORS

2158 JOHNSON STREET, POST OFFICE BOX 1550, FORT MYERS, FLORIDA, 33902-1550

PHONE: 941-334-0046