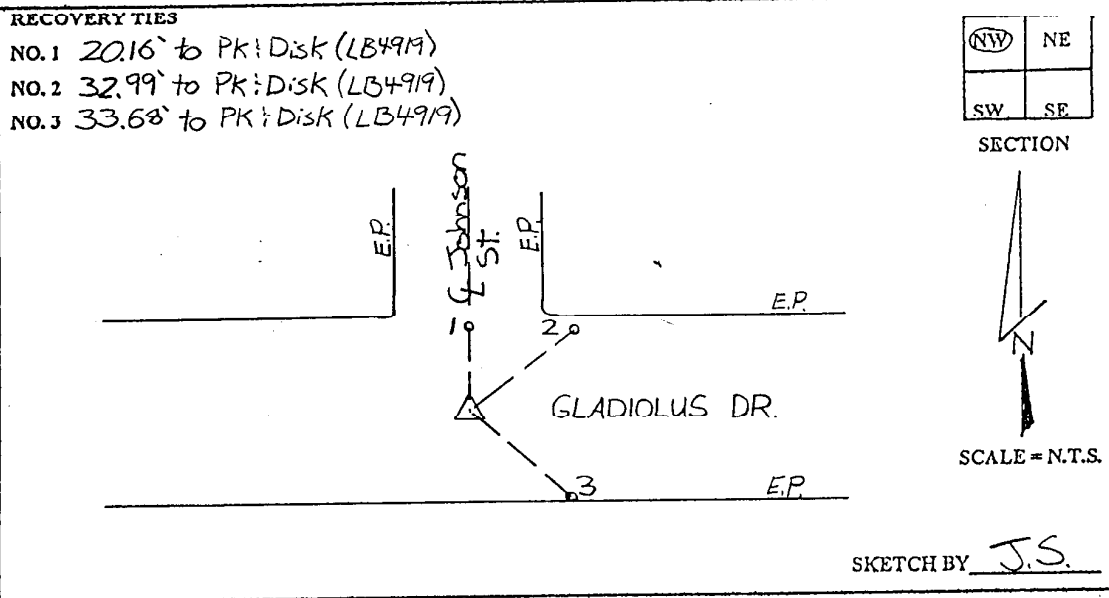


LEE COUNTY
SURVEY MARK DESCRIPTION

DESIGNATION 2421 COUNTY LEE STATE FLORIDA
 LOCATED IN SEC 32 TWP 45S RGE 24E USGS QUAD MAP FORT MYERS SW
 TO REACH SURVEY MARK:
 FROM MCGREGOR BLVD, RUN EAST ALONG GLADIOLUS DR. 0.9 mi.±
 TO JOHNSON ST. AND MARK.

TYPE OF SET 3" LEE COUNTY PUBLIC WORKS DISK IN PAVEMENT
 MARK _____ DATE SET JUNE 18 19 98
 HORIZONTAL CONTROL ORIGINATED ON 2ND ST ORDER CONTROL BY _____
 ON _____ 1927 DATUM. ON 1983 (1990 GPS ADJUSTMENT) DATUM.
 COORDINATES (FT). 2ND ORDER COORDINATES (FT) 2ND ORDER
 NORTHING (Y) _____ NORTHING (Y) 794048.88
 EASTING (X) _____ EASTING (X) 678994.22
 GRID FLORIDA TRANSVERSE MERCATOR RECOVERED BY _____
 ZONE WEST DATE CONDITION _____
 FIELD BOOK BW1 #2 PAGE 5



JOHNSON ENGINEERING, INC.

CIVIL ENGINEERS - LAND SURVEYORS

2158 JOHNSON STREET, POST OFFICE BOX 1550, FORT MYERS, FLORIDA, 33902-1550

PHONE: 941-334-0046