

# LEE COUNTY SURVEY MARK DESCRIPTION

DESIGNATION 2444 COUNTY LEE STATE FLORIDA  
LOCATED IN SEC 22 TWP 4SS RGE 23E USGS QUAD MAP FORT MYERS SW

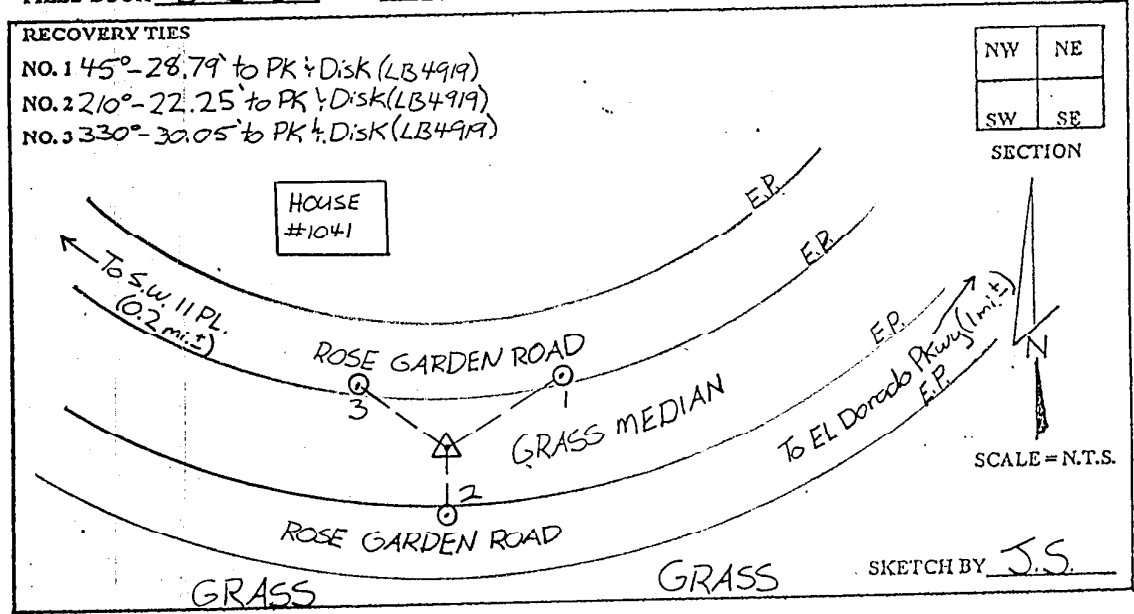
TO REACH SURVEY MARK:  
FROM CAPE CORAL PKWY, RUN SOUTH ALONG PELICAN BLVD 0.9 mi.± TO EL DORADO PKWY; THENCE CONTINUE RUNNING SOUTH, RUNNING THROUGH THE INTERSECTION W/ EL DORADO PKWY ONTO ROSE GARDEN ROAD; THENCE RUN ALONG ROSE GARDEN ROAD 1 mi.± TO MARK.

TYPE OF SET 6" ROUND CONCRETE MONUMENT W/ 3" LEE COUNTY MARK PUBLIC WORKS ALUM. DISK DATE SET APRIL 23 19 98

HORIZONTAL CONTROL ORIGINATED ON 2ND ORDER CONTROL BY \_\_\_\_\_  
ON 1927 DATUM. ON 1983 (1990 GPS ADJUSTMENT) DATUM.

COORDINATES (FT.) 2ND ORDER COORDINATES (FT.) 2ND ORDER  
NORTHING (Y) \_\_\_\_\_ NORTHING (X) 802968.33  
EASTING (X) \_\_\_\_\_ EASTING (X) 657682.44

GRID FLORIDA TRANSVERSE MERCATOR RECOVERED BY \_\_\_\_\_  
ZONE WEST DATE CONDITION \_\_\_\_\_  
FIELD BOOK BWL #3 PAGE 5



## JOHNSON ENGINEERING, INC.

CIVIL ENGINEERS - LAND SURVEYORS  
2158 JOHNSON STREET, POST OFFICE BOX 1550, FORT MYERS, FLORIDA, 33902-1550  
PHONE: 941-334-0046