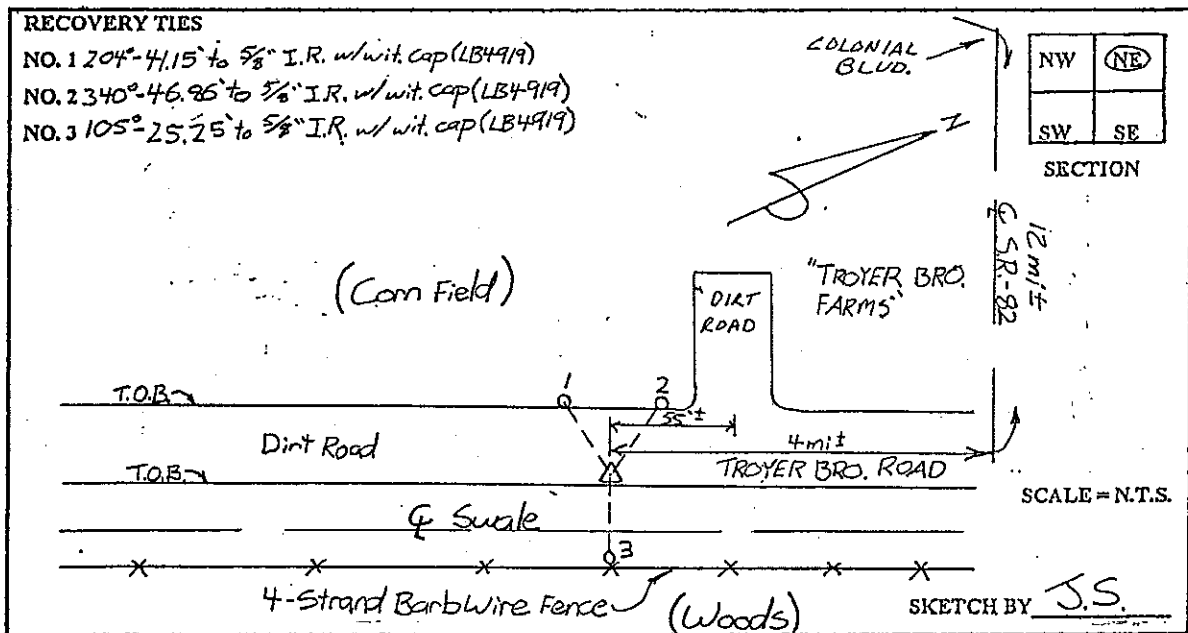


LEE COUNTY SURVEY MARK DESCRIPTION.

DESIGNATION 94 COUNTY LEE STATE FLORIDA
 LOCATED IN SEC 16 TWP 46S RGE 27E USGS QUAD MAP CORKSCREW

TO REACH SURVEY MARK:
 FROM COLONIAL BLVD. EXTENSION, RUN SOUTH EASTERLY ALONG S.R. 82
 12 mi.± TO TROYER BRO. ROAD, THENCE RUN SOUTH ALONG TROYER BRO.
 ROAD 4 mi.± TO DISK '94'

TYPE OF SET 6" ROUND CONCRETE MONUMENT W/ 3" LEE COUNTY
 MARK PUBLIC WORKS ALUM. DISK DATE SET JUNE 22 1998
 HORIZONTAL CONTROL ORIGINATED ON 2ND 1ST ORDER CONTROL BY _____
 ON 1927 DATUM. ON 1983 (1990 GPS ADJUSTMENT) DATUM.
 COORDINATES (FT.) NAD ORDER _____ COORDINATES (FT.) NAD ORDER _____
 NORTHING (Y) _____ NORTHING (Y) 777863.204
 EASTING (X) _____ EASTING (X) 781842.242
 GRID FLORIDA TRANSVERSE MERCATOR RECOVERED BY _____
 ZONE WEST DATE CONDITION _____
 FIELD BOOK BWL#4 PAGE 10



JOHNSON ENGINEERING, INC.

CIVIL ENGINEERS - LAND SURVEYORS

2158 JOHNSON STREET, POST OFFICE BOX 1550, FORT MYERS, FLORIDA, 33902-1550

PHONE: 941-334-0046