

**LEE COUNTY
SURVEY MARK DESCRIPTION.**

DESIGNATION 81 COUNTY LEE STATE FLORIDA
 LOCATED IN SEC 33 TWP 46S RGE 27E USGS QUAD MAP CORKSCREW

TO REACH SURVEY MARK:

FROM I-75 RUN EAST FROM EXIT 19 ALONG CORKSCREW ROAD 9 mi. ± TO A DIRT ROAD JUST EAST OF "CORKSCREW COUNTRY STORE", THENCE RUN SOUTH ALONG THIS DIRT ROAD 2 mi. ± TO A SAND AND GRASS ROAD RUNNING THROUGH AN ORANGE GROVE WITH A YELLOW GATE, THENCE RUN EAST 0.8 mi. ± TO ANOTHER GRASS ROAD, THENCE RUN SOUTH AND EAST ALONG SAID GRASS ROAD TO MARK.

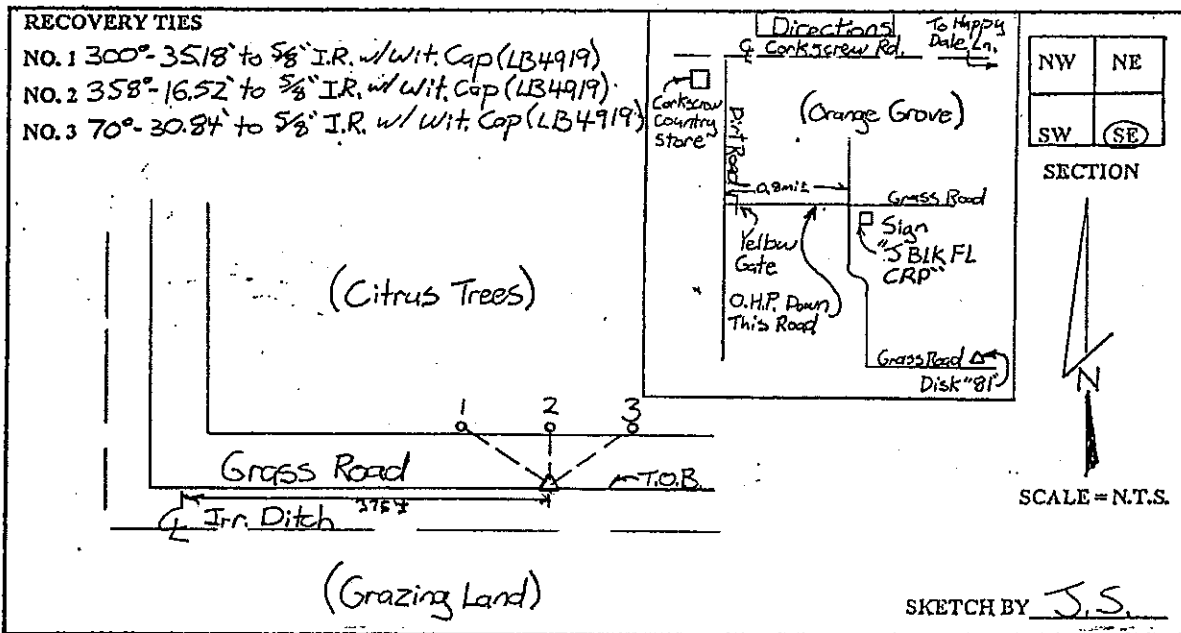
TYPE OF SET 6" ROUND CONCRETE MONUMENT w/ 3" LEE COUNTY PUBLIC

MARK WORKS ALUM. DISK DATE SET JUNE 25 19 98

HORIZONTAL CONTROL ORIGINATED ON 2ND/1ST ORDER CONTROL BY _____
 ON 1927 DATUM. ON 1983 (1990 GPS ADJUSTMENT) DATUM.

COORDINATES (FT.) NAD ORDER _____ COORDINATES (FT.) NAD ORDER _____
 NORTHING (Y) _____ NORTHING (Y) 759246.516
 EASTING (X) _____ EASTING (X) 781943.658

GRID FLORIDA TRANSVERSE MERCATOR RECOVERED BY _____
 ZONE WEST DATE CONDITION _____
 FIELD BOOK BWL #4 PAGE 15



JOHNSON ENGINEERING, INC.

CIVIL ENGINEERS - LAND SURVEYORS

2158 JOHNSON STREET, - POST OFFICE BOX 1550, FORT MYERS, FLORIDA, 33902-1550

PHONE: 941-334-0046