

LEE COUNTY
SURVEY MARK DESCRIPTION

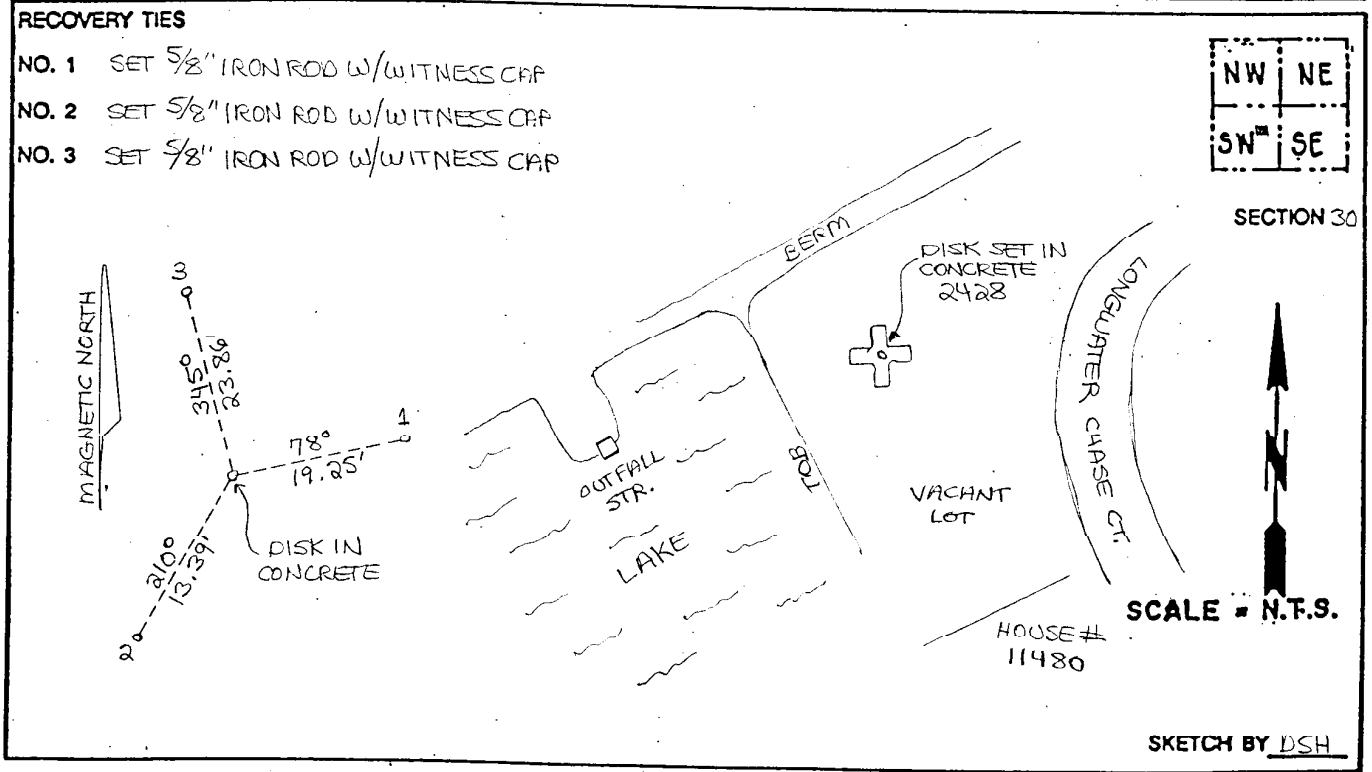
1092

DESIGNATION 2428 COUNTY LEE STATE FL.
 LOCATED IN SEC 30 TWP 45 S RGE 24 E USGS QUAD MAP FORT MYERS SW
 TO REACH SURVEY MARK:

TYPE OF 3/4" ALUMINUM LEE COUNTY SURVEY CONTROL MARK SET IN CONCRETE
 MARK 2428 DATE SET APRIL 18 1998
 HORIZONTAL CONTROL ORIGINATED ON 2nd/1st ORDER CONTROL BY NATIONAL GEODETIC SURVEY (NGS)
 ON 1927 DATUM. ON 1983 (1990 GPS Adjustment) DATUM.
 COORDINATES (FT), 2nd ORDER COORDINATES (FT), 2nd ORDER
 NORTHING (M) N/A NORTHING (M) 797841.263
 EASTING (M) N/A EASTING (M) 672938.976
 GRID FLORIDA TRANSVERSE MERCATOR RECOVERED BY _____
 ZONE WEST DATE, CONDITION _____
 FIELD BOOK RIW #1 PAGE 48

RECOVERY TIES

- NO. 1 SET 5/8" IRON ROD W/WITNESS CAP
- NO. 2 SET 5/8" IRON ROD W/WITNESS CAP
- NO. 3 SET 5/8" IRON ROD W/WITNESS CAP



JOHNSON ENGINEERING, INC.
 CIVIL ENGINEERS LAND SURVEYORS
 2158 JOHNSON STREET, POST OFFICE BOX 1550, FORT MYERS, FLORIDA, 33902-1550
 PHONE (941) 334-0046