

LEE COUNTY SURVEY MARK DESCRIPTION

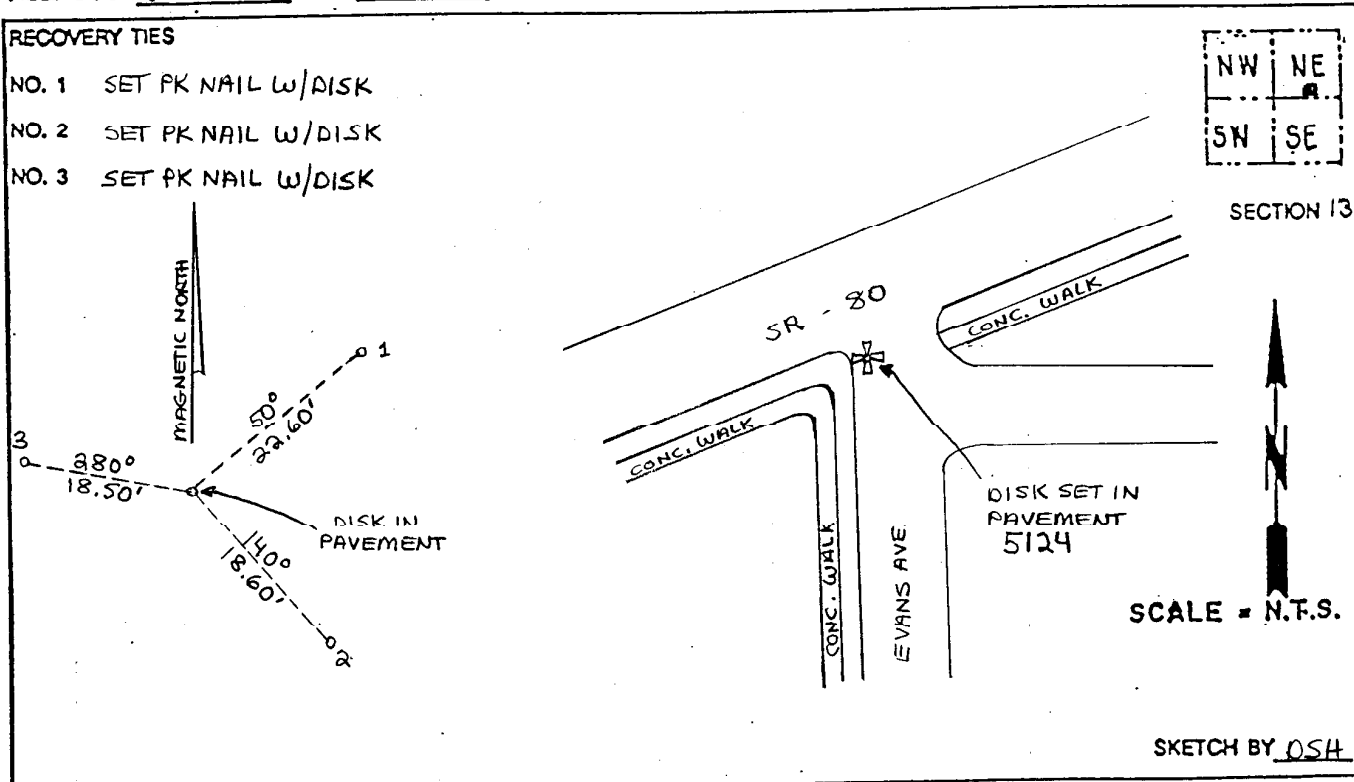
1064

DESIGNATION 5124 COUNTY LCC STATE FL.
 LOCATED IN SEC 13 TWP 44 S RGE 24 E USGS QUAD MAP FORT MYERS
 TO REACH SURVEY MARK:

TYPE OF 3/4" ALUMINUM LEE COUNTY SURVEY CONTROL MARK SET IN PAVEMENT
 MARK 5124 DATE SET APRIL 8 1998
 HORIZONTAL CONTROL ORIGINATED ON 2nd/1st ORDER CONTROL BY NATIONAL GEODETIC SURVEY (NGS)
 ON 1927 DATUM. ON 1983 (1990 GPS Adjustment) DATUM.
 COORDINATES (FT). 2nd ORDER COORDINATES (FT). 2nd ORDER
 NORTHING (M) N/A NORTHING (M) 841759.0671
 EASTING (M) N/A EASTING (M) 701690.2170
 GRID FLORIDA TRANSVERSE MERCATOR RECOVERED BY _____
 ZONE WEST DATE, CONDITION _____
 FIELD BOOK JEI # 2 PAGE 76

RECOVERY TIES

- NO. 1 SET PK NAIL W/DISK
- NO. 2 SET PK NAIL W/DISK
- NO. 3 SET PK NAIL W/DISK



SKETCH BY OSH