

LEE COUNTY SURVEY MARK DESCRIPTION

DESIGNATION 46-24-09-02 COUNTY LEE STATE FL.

LOCATED IN SEC 09 TWP 46 S. RGE 24 E. USGS QUAD MAP Fort Myers Beach

TO REACH SURVEY MARK:

From the intersection of Summerlin Road and Bass Road; thence southerly along Bass Road 1.0 mile to the junction of a power line; thence westerly along said power line 0.10 mile to a dirt track and the mark, said mark is 10' north of a witness sign, 84' south of the centerline of the power line, and 21' east of the dirt track.

TYPE OF 4" X 4" Concrete Monument With Brass Disk

MARK GPS 46-24-09-02 DATE SET March 21, 19 90

HORIZONTAL CONTROL ORIGINATED ON 2nd/1st ORDER CONTROL BY USC & GS / NGS

ON 1927 DATUM. ON 1983 (1990 GPS Adjustment) DATUM.

COORDINATES (FT), 2nd ORDER COORDINATES (FT), 2nd ORDER

NORTHING (Y) 782538.560 NORTHING (Y) 782708.323

EASTING (X) 529148.861 EASTING (X) 685379.700

GRID FLORIDA TRANSVERSE MERCATOR RECOVERED BY _____

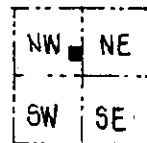
ZONE WEST DATE, CONDITION _____

FIELD BOOK 1738 PAGE 36

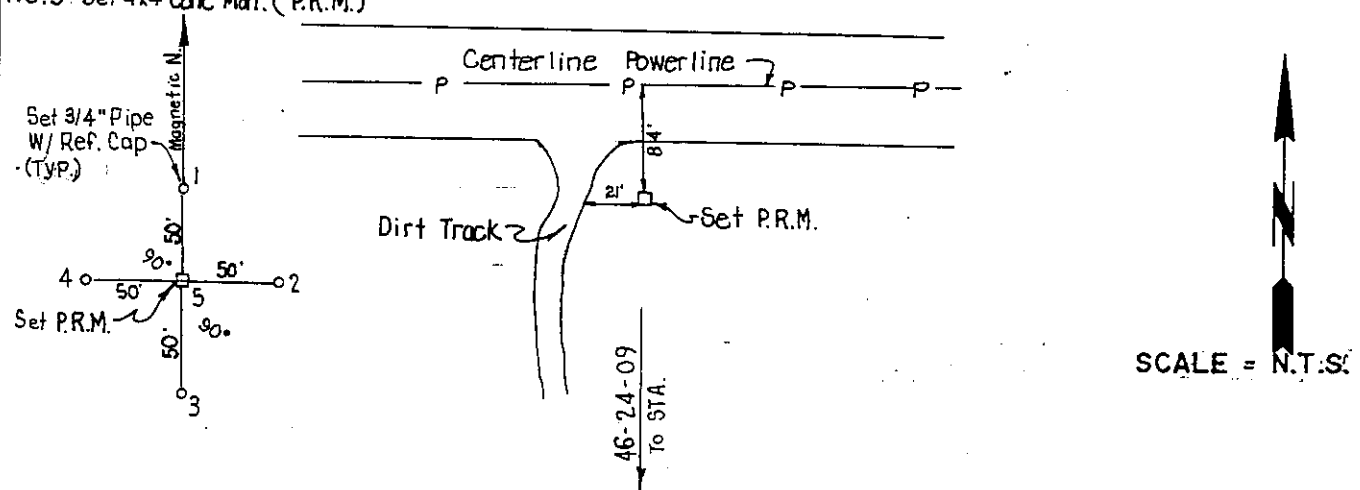
RECOVERY TIES

- NO. 1 Set 3/4" Pipe W/Ref. Cap
- NO. 2 Set 3/4" Pipe W/Ref. Cap
- NO. 3 Set 3/4" Pipe W/Ref. Cap
- NO. 4 Set 3/4" Pipe W/Ref. Cap
- NO. 5 Set 4x4" Conc. Mon. (P.R.M.)

Note: Witness Sign 10'
South of Monument



SECTION 09



SKETCH BY JFN

JOHNSON ENGINEERING, INC.

CIVIL ENGINEERS - LAND SURVEYORS

2158 JOHNSON STREET, POST OFFICE BOX 1550, FORT MYERS, FLORIDA, 33902-1550
PHONE (813) 334-0046