

LEE COUNTY SURVEY MARK DESCRIPTION

DESIGNATION 46-24-07-01 COUNTY LEE STATE FL.

LOCATED IN SEC 07 TWP 46S. RGE 24 E. USGS QUAD MAP Fort Myers Beach

TO REACH SURVEY MARK:

From the intersection of San Carlos Blvd. and Pine Ridge Rd. travel east along Pine Ridge Rd. to a curve to the north and the station. Mark is 34.6' south of the south edge of pavement, 20' northwest of a power pole and 10' north of a witness sign.

TYPE OF 4" x 4" Concrete Monument With Brass Disk

MARK GPS 46-24-07-01 DATE SET March 27, 1990

HORIZONTAL CONTROL ORIGINATED ON 2nd/1st ORDER CONTROL BY USC & GS / NGS

ON 1927 DATUM. ON 1983 (1990 GPS Adjustment) DATUM.

COORDINATES (FT), 2nd ORDER COORDINATES (FT), 2nd ORDER

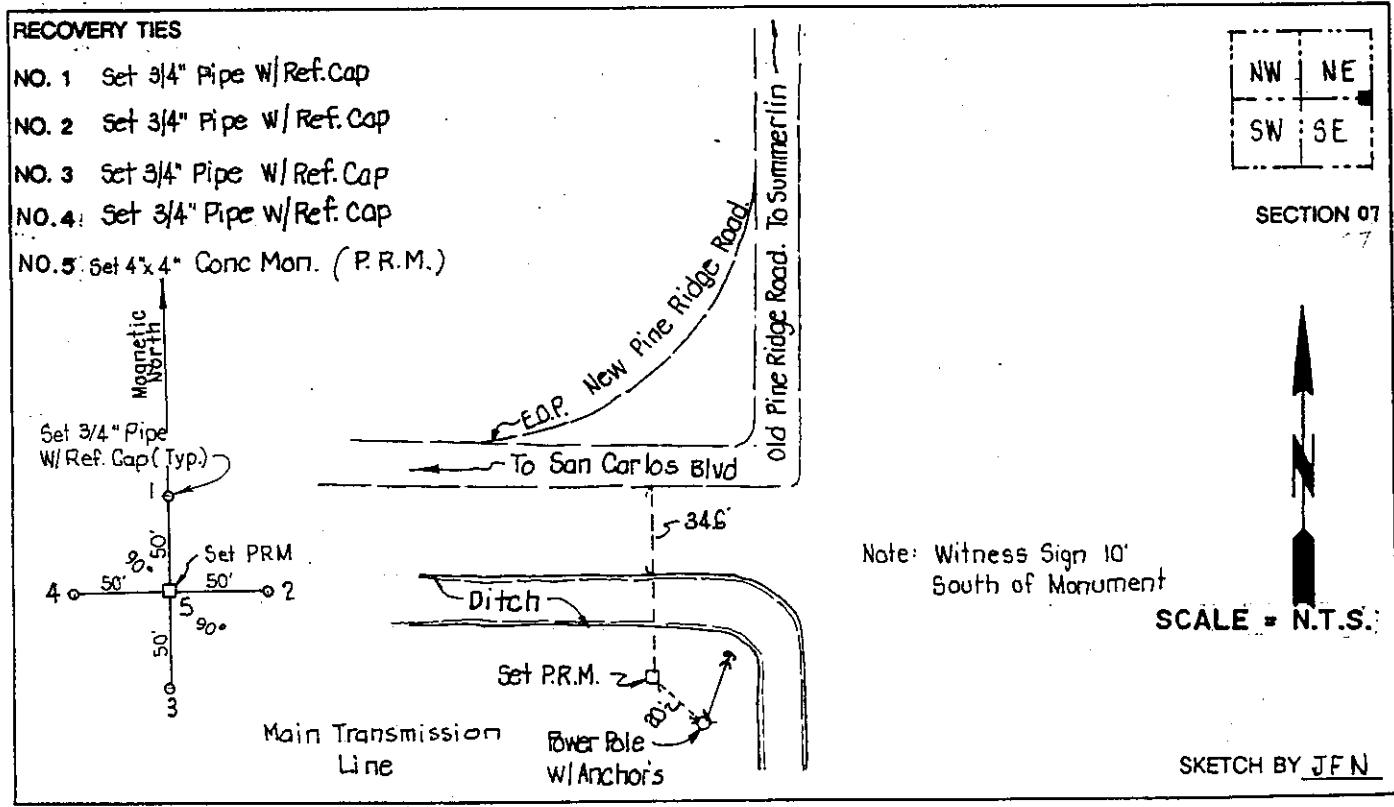
NORTHING (N) 782737.214 NORTHING (N) 782906.971

EASTING (X) 521200.007 EASTING (X) 677430.804

GRID FLORIDA TRANSVERSE MERCATOR RECOVERED BY _____

ZONE WEST - DATE, CONDITION _____

FIELD BOOK 1738 PAGE 56



JOHNSON ENGINEERING, INC.
CIVIL ENGINEERS - LAND SURVEYORS
2158 JOHNSON STREET, POST OFFICE BOX 1550, FORT MYERS, FLORIDA, 33902-1550
PHONE (813) 334-0046