

LEE COUNTY SURVEY MARK DESCRIPTION

DESIGNATION 43-23-03 COUNTY LEE STATE FL
 LOCATED IN SEC 03 TWP 43 S. RGE 23 E. USGS QUAD MAP Punta Gorda S.E.

TO REACH SURVEY MARK:

From the intersection of S.R. 765 (Burnt Store Rd.) and the Lee-Charlotte County Line travel north along S.R. 765 for 1.9 miles to a shell rock road, then travel east along the shell road for 1 mile to a dirt track, then travel southerly along the track for 2 miles to a fork in the trail and an open area surrounded by cypress. Then take the westerly fork and travel southerly for 0.7 mile to a pine and myrtle slough and the station.

TYPE OF 4"x4" Conc. Monument w/ Brass Disk

MARK 43-23-03 DATE SET June 28, 1990

HORIZONTAL CONTROL ORIGINATED ON 2nd/1st ORDER CONTROL BY USC & GS / NGS

ON 1927 DATUM. ON 1983 (1990 GPS Adjustment) DATUM.

COORDINATES (FT), 2nd ORDER COORDINATES (FT), 2nd ORDER

NORTHING (Y) 885205.578 NORTHING (Y) 885375.790

EASTING (X) 498888.190 EASTING (X) 655118.853

GRID: FLORIDA TRANSVERSE MERCATOR

RECOVERED BY _____

ZONE WEST

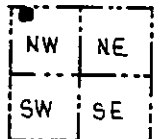
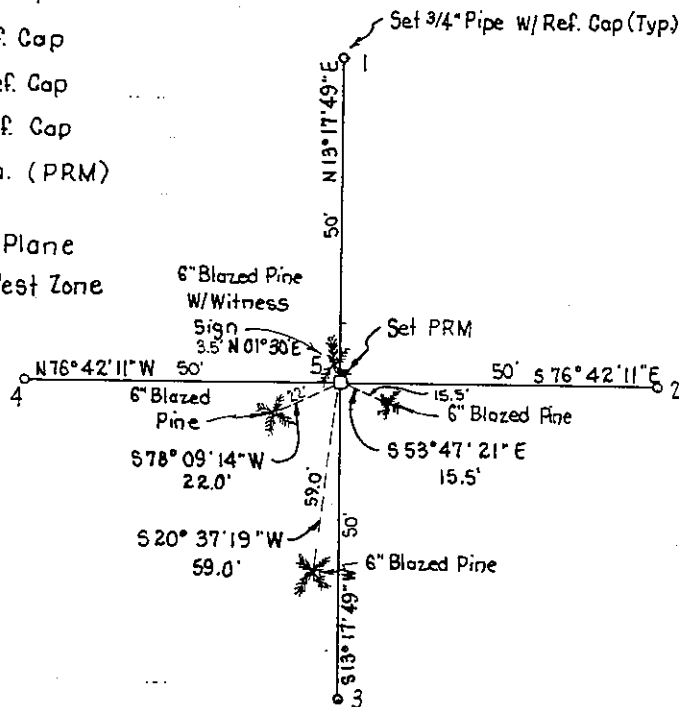
DATE, CONDITION _____

FIELD BOOK 1755 PAGE 56

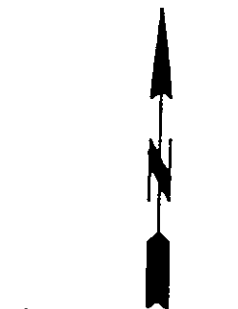
RECOVERY TIES

- NO. 1 Set 3/4" Pipe w/ Ref. Cap
- NO. 2 Set 3/4" Pipe w/ Ref. Cap
- NO. 3 Set 3/4" Pipe w/ Ref. Cap
- NO. 4: Set 3/4" Pipe w/ Ref. Cap
- NO. 5: Set 4"x4" Conc. Mon. (PRM)

Bearing Basis: State Plane
 Coordinate Florida West Zone



SECTION 03



SCALE = N.T.S.

SKETCH BY JEN