

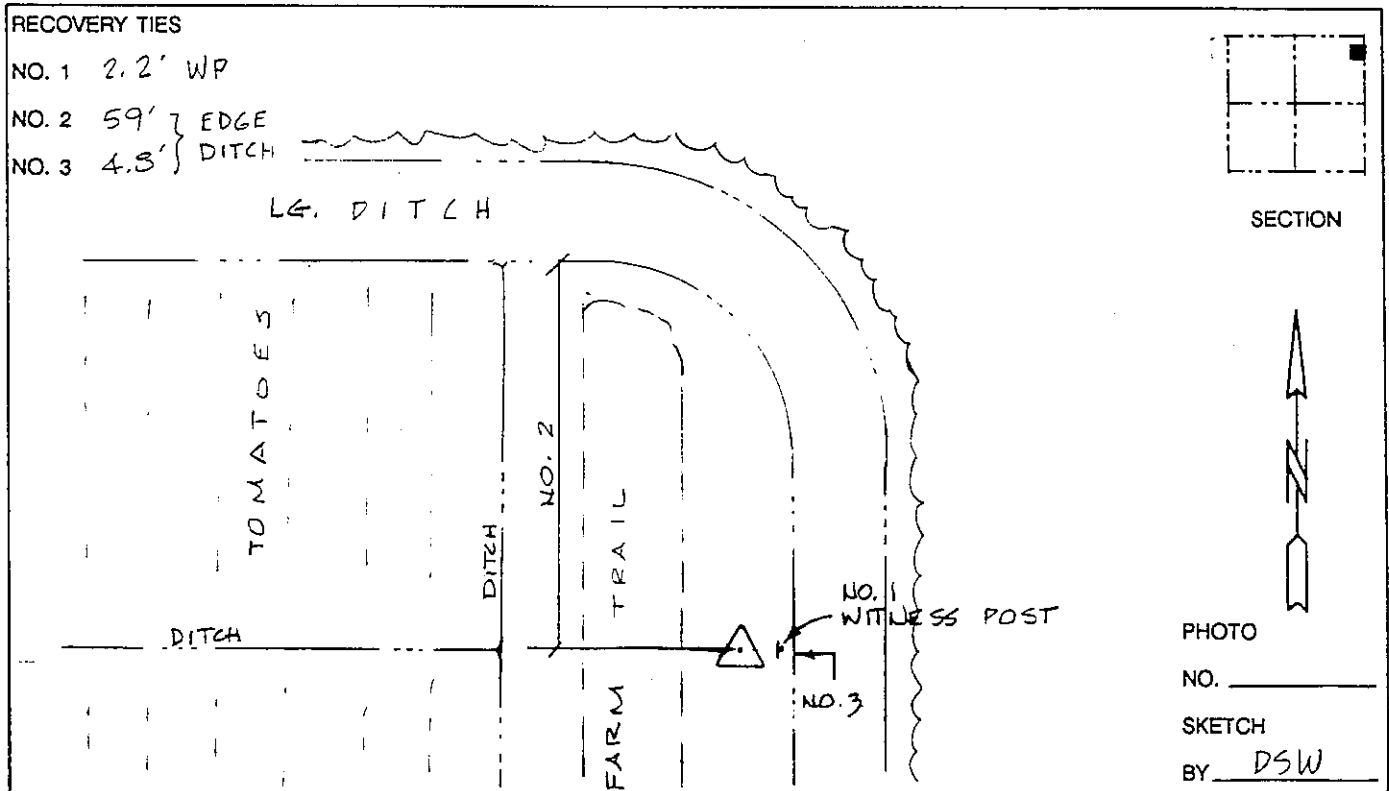
# LEE COUNTY SURVEY MARK DESCRIPTION



SURVEY CONTROL BY:  
DENI ASSOCIATES, INC.  
FORT MYERS, FLORIDA

MAPPING BY:  
WOOLPERT CONSULTANTS

DESIGNATION 1-01 48 26 (GPS 9052) COUNTY LEE STATE FL  
 LOCATED IN SEC 1 TWP 48S RGE 76E USGS QUAD MAP CORKSCREW SW  
 TO REACH SURVEY MARK FROM 1.75 & BONITA RD; GO EASTERLY FOR 4.75 MILES TO END; THENCE INTO AGRICULTURE FIELD TO SOUTH 0.15 MILES; THENCE EAST 1.0 TO END; THENCE NORTH 0.1 MILES TO MARK.  
 TYPE OF 3" DIA. ALUM. DISK IN CONC.; 4" BLW. GRD.  
 MARK "LEE COUNTY - DENI ASSOCIATES" DATE SET 1990  
 HORIZONTAL CONTROL ORIGINATED ON 1st ORDER HORIZONTAL CONTROL ORIGINATED ON \_\_\_\_\_ ORDER  
 CONTROL BASED ON FLORIDA HIGH PRECISION GPS NETWORK, CONTROL BY \_\_\_\_\_  
 ON NORTH AMERICAN DATUM OF 1983, 1990 ADJUSTMENT ON \_\_\_\_\_ DATUM  
 COORDINATES (FT), 1st ORDER COORDINATES (FT), \_\_\_\_\_ ORDER  
 NORTHING (Y) 726,505.203 NORTHING (Y) \_\_\_\_\_  
 EASTING (X) 768,050.251 EASTING (X) \_\_\_\_\_  
 GRID FLORIDA TRANSVERSE MERCATOR RECOVERED BY \_\_\_\_\_  
 ZONE WEST SCALE FACTOR .999956 DATE, CONDITION \_\_\_\_\_  
 FIELD BOOK \_\_\_\_\_ PAGE \_\_\_\_\_



VERTICAL CONTROL ORIGINATED ON 2nd ORDER CONTROL ESTABLISHED BY N. G. S. AND F. D. O. T.  
 ON NATIONAL GEODETIC VERTICAL DATUM OF 1929.  
 ELEVATION (FT) \_\_\_\_\_, 3rd ORDER LEVEL BOOK \_\_\_\_\_ PAGE \_\_\_\_\_