

LEE COUNTY SURVEY MARK DESCRIPTION



SURVEY CONTROL BY:
DENI ASSOCIATES, INC.
FORT MYERS, FLORIDA

MAPPING BY:
WOOLPERT CONSULTANTS

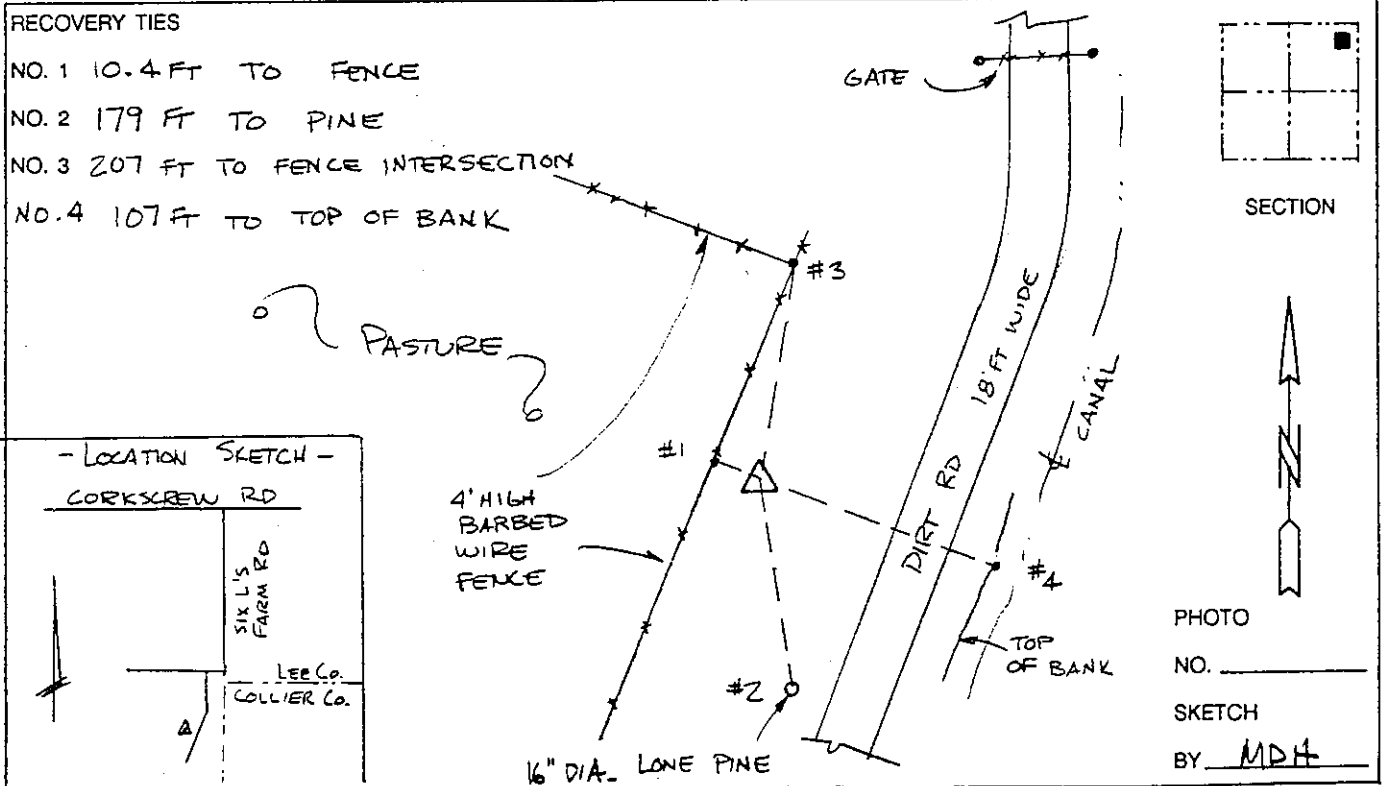
DESIGNATION 1-01-47-26 ^(GPS 9067) COUNTY LEE STATE FL
 LOCATED IN SEC 1 TWP 47S RGE 26E USGS QUAD MAP CORKSCREW NW
 TO REACH SURVEY MARK FROM THE INTERSECTION OF SIX L'S FARM ROAD & CORKSCREW RD GO SOUTH ON SIX L'S FARM RD 2.1mi± TO MARK.

TYPE OF 3" DIAMETER ALUMINUM DISK IN CONCRETE 0.2 FT BELOW GIRD.
 MARK "LEE COUNTY DENI ASSOCIATES 1990" DATE SET 1990

HORIZONTAL CONTROL ORIGINATED ON 1st ORDER HORIZONTAL CONTROL ORIGINATED ON _____ ORDER
 CONTROL BASED ON FLORIDA HIGH PRECISION GPS NETWORK, CONTROL BY _____
 ON NORTH AMERICAN DATUM OF 1983, 1990 ADJUSTMENT ON _____ DATUM
 COORDINATES (FT), 1st ORDER COORDINATES (FT), _____ ORDER
 NORTHING (Y) 758,565,548 NORTHING (Y) _____
 EASTING (X) 767,252,271 EASTING (X) _____

GRID FLORIDA TRANSVERSE MERCATOR RECOVERED BY _____
 ZONE WEST SCALE FACTOR .999955 DATE, CONDITION _____

FIELD BOOK _____ PAGE _____



VERTICAL CONTROL ORIGINATED ON 2nd ORDER CONTROL ESTABLISHED BY N. G. S. AND F. D. O. T.
 ON NATIONAL GEODETIC VERTICAL DATUM OF 1929.
 ELEVATION (FT) _____ 3rd ORDER LEVEL BOOK _____ PAGE _____