

# LEE COUNTY SURVEY MARK DESCRIPTION



SURVEY CONTROL BY:  
DENI ASSOCIATES, INC.  
FORT MYERS, FLORIDA

MAPPING BY:  
WOOLPERT CONSULTANTS

DESIGNATION GPS USL&GS CORKSCREW (9069) COUNTY COLLIER STATE FL

LOCATED IN SEC 18 TWP 46S RGE 28E USGS QUAD MAP CORKSCREW

TO REACH SURVEY MARK FROM THE INTERSECTION OF IMMOKALEE RD (SR 82) & CORKSCREW RD (SR 850); GO SOUTHERLY ON CORKSCREW RD (SR 850) 3.4 MI ±. TO INTERSECTION OF WHIDDEN'S LOOP RD & CORKSCREW RD.

TYPE OF 4" DIA. BRASS DISK SET IN 10" X 10" CONCRETE PAD  
MARK "VSC # 65 1955" DATE SET 1990

HORIZONTAL CONTROL ORIGINATED ON 1st ORDER  
CONTROL BASED ON FLORIDA HIGH PRECISION GPS NETWORK,  
ON NORTH AMERICAN DATUM OF 1983, 1990 ADJUSTMENT  
COORDINATES (FT), 1st ORDER

NORTHING (Y) 778,011,360  
EASTING (X) 800,558,627

GRID FLORIDA TRANSVERSE MERCATOR

ZONE WEST SCALE FACTOR .999965

FIELD BOOK \_\_\_\_\_ PAGE \_\_\_\_\_

HORIZONTAL CONTROL ORIGINATED ON \_\_\_\_\_ ORDER  
CONTROL BY \_\_\_\_\_  
ON \_\_\_\_\_ DATUM  
COORDINATES (FT), \_\_\_\_\_ ORDER

NORTHING (Y) \_\_\_\_\_  
EASTING (X) \_\_\_\_\_

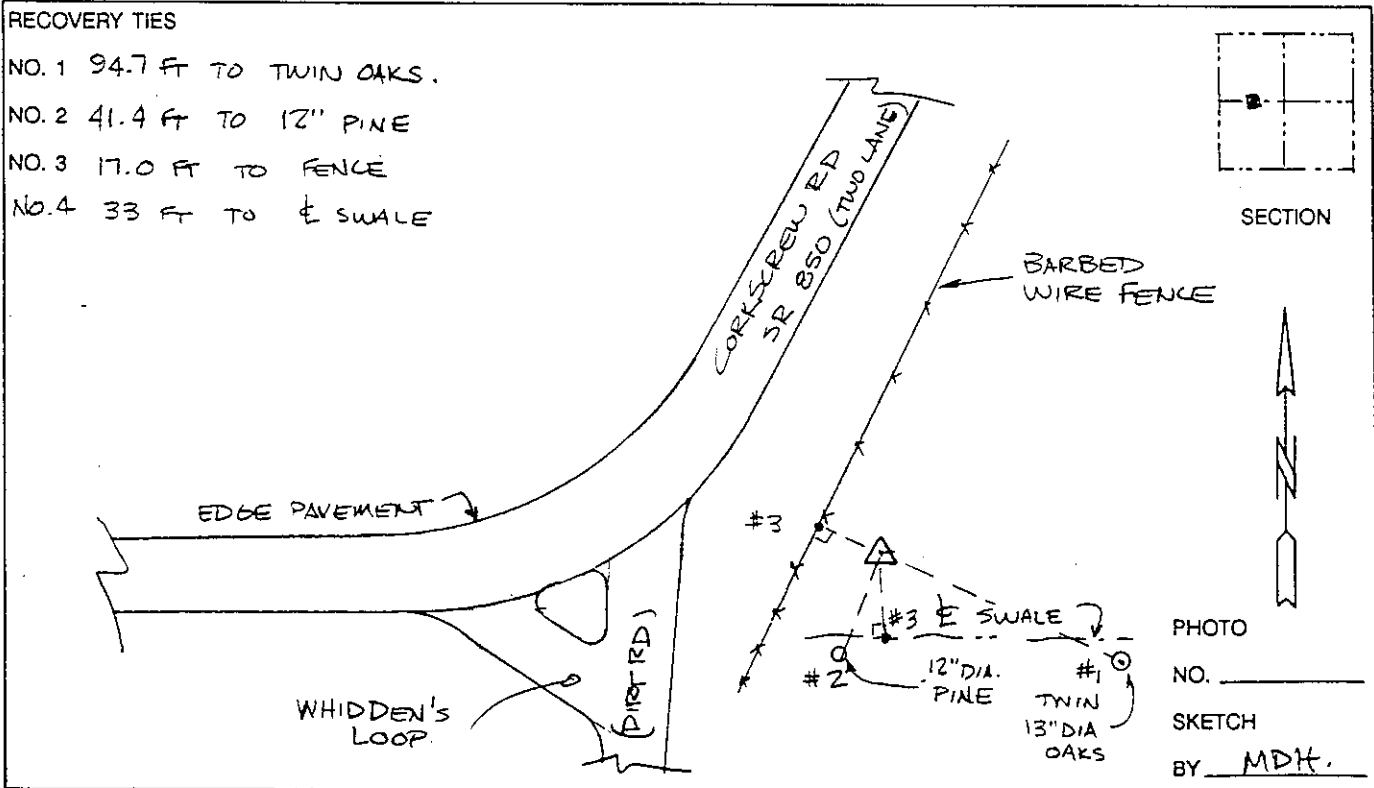
RECOVERED BY DENI ASSOCIATES

DATE, CONDITION 2-91

GOOD

**RECOVERY TIES**

- NO. 1 94.7 FT TO TWIN OAKS.
- NO. 2 41.4 FT TO 12" PINE
- NO. 3 17.0 FT TO FENCE
- NO. 4 33 FT TO SWALE



VERTICAL CONTROL ORIGINATED ON 2nd ORDER CONTROL ESTABLISHED BY N. G. S. AND F. D. O. T.

ON NATIONAL GEODETIC VERTICAL DATUM OF 1929.

ELEVATION (FT) \_\_\_\_\_ 3rd ORDER

LEVEL BOOK \_\_\_\_\_ PAGE \_\_\_\_\_

PHOTO NO. \_\_\_\_\_  
SKETCH BY MDK.