

LEE COUNTY SURVEY MARK DESCRIPTION



SURVEY CONTROL BY:
DENI ASSOCIATES, INC.
FORT MYERS, FLORIDA

MAPPING BY:
WOOLPERT CONSULTANTS

DESIGNATION 2-21-46-27 ^{GPS} (9074) COUNTY LEE STATE FL

LOCATED IN SEC 21 TWP 46S RGE 27E USGS QUAD MAP CORKSCREW

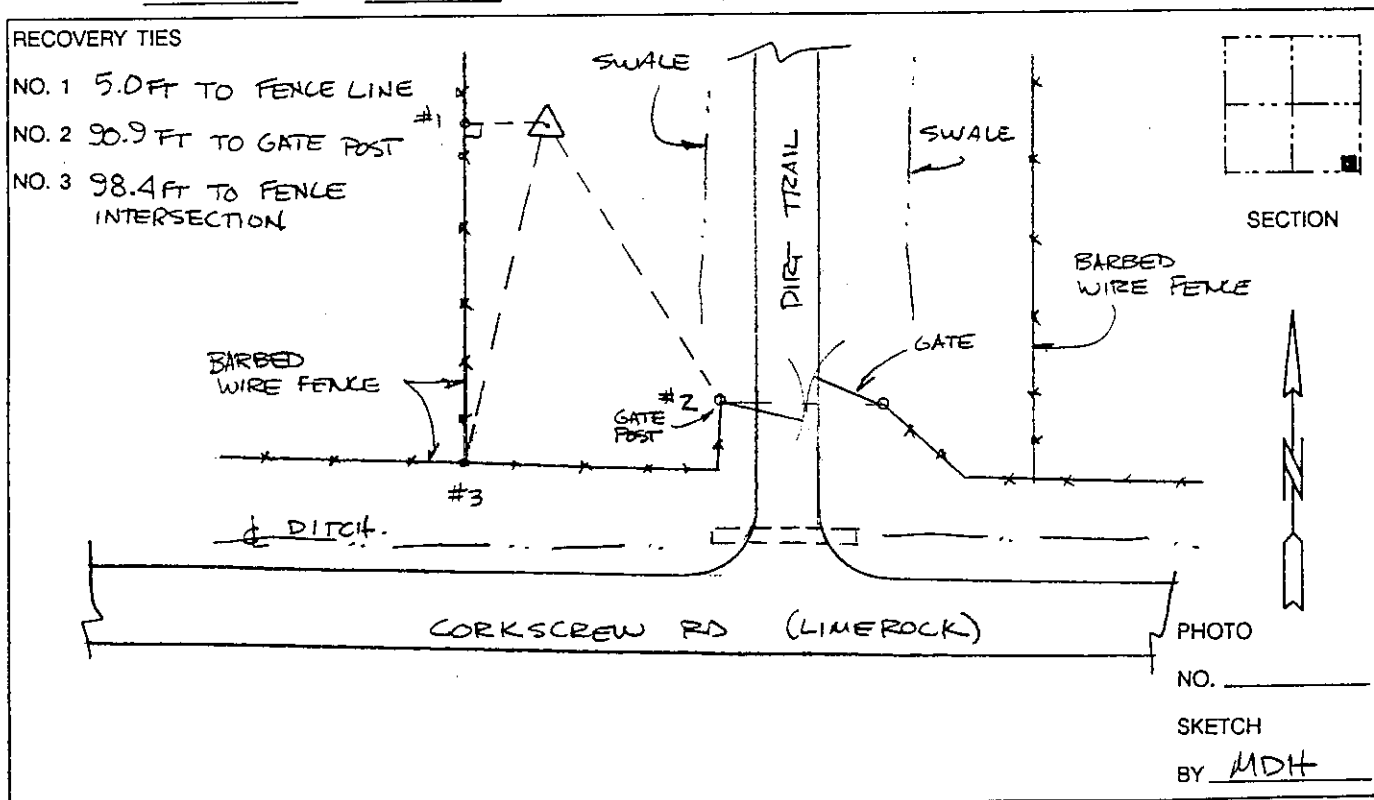
TO REACH SURVEY MARK FROM THE INTERSECTION OF SIX L'S FARM RD & CORKSCREW RD & GO EAST ON CORKSCREW RD 2.0mi± TO CARTER RD (ROAD TO SOUTH); THENCE CONTINUE EAST ON CORKSCREW RD 1.0mi± TO MARK NEAR SOUTHEAST CORNER SECTION 21

TYPE OF 3" DIAMETER ALUMINUM DISK IN CONCRETE 0.1 FT BELOW GROUND;
MARK "LEE COUNTY DENI ASSOCIATES 1990" DATE SET 1990

HORIZONTAL CONTROL ORIGINATED ON 1st ORDER HORIZONTAL CONTROL ORIGINATED ON _____ ORDER
CONTROL BASED ON FLORIDA HIGH PRECISION GPS NETWORK, CONTROL BY _____
ON NORTH AMERICAN DATUM OF 1983, 1990 ADJUSTMENT ON _____ DATUM
COORDINATES (FT), 1st ORDER COORDINATES (FT), _____ ORDER
NORTHING (Y) 769,855.321 NORTHING (Y) _____
EASTING (X) 783,190.988 EASTING (X) _____

GRID FLORIDA TRANSVERSE MERCATOR RECOVERED BY _____
ZONE WEST SCALE FACTOR ,999960 DATE, CONDITION _____

FIELD BOOK _____ PAGE _____



VERTICAL CONTROL ORIGINATED ON 2nd ORDER CONTROL ESTABLISHED BY N. G. S. AND F. D. O. T.

ON NATIONAL GEODETIC VERTICAL DATUM OF 1929.

ELEVATION (FT) _____ 3rd ORDER LEVEL BOOK _____ PAGE _____