

LEE COUNTY SURVEY MARK DESCRIPTION



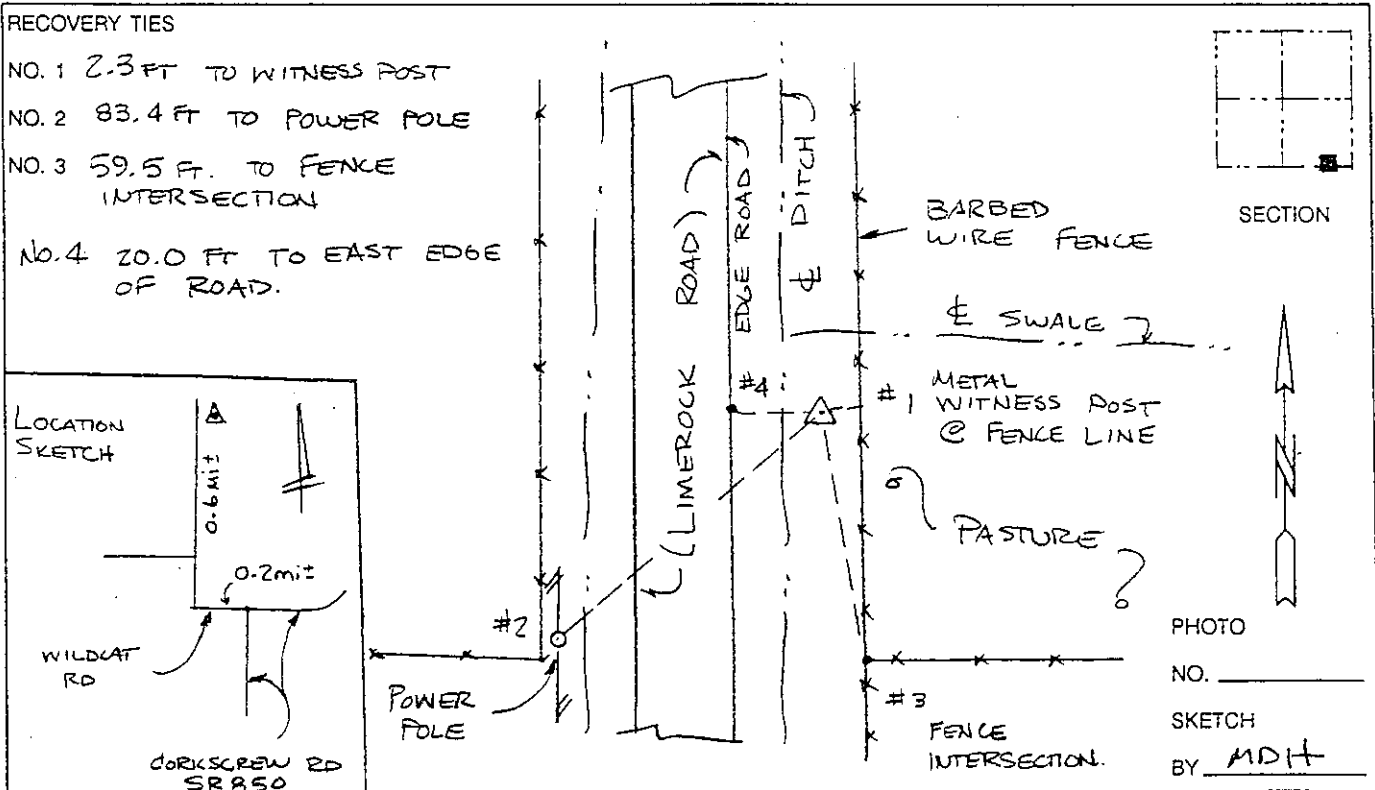
SURVEY CONTROL BY:
DENI ASSOCIATES, INC.
FORT MYERS, FLORIDA

MAPPING BY:
WOOLPERT CONSULTANTS

DESIGNATION 2-12-46-27 ^(GPS) (9070) COUNTY LEE STATE FL
 LOCATED IN SEC 12 TWP 46S RGE 27E USGS QUAD MAP CORKSCREW
 TO REACH SURVEY MARK FROM THE INTERSECTION OF LIMEROCK LEE RD (SR 82)
& CORKSCREW RD (SR 850); GO SOUTH ON CORKSCREW
RD (SR 850) 3.7 mi ± TO INTERSECTION OF CORKSCREW RD
& WILDCAT RD; THENCE WEST 0.2 mi ± THENCE NORTH 0.6 mi ±.
 TYPE OF 3" DIAMETER DISK IN CONCRETE, 0.4 FT BELOW GROUND; "LEE COUNTY"
 MARK DENI ASSOCIATES 1990" DATE SET 1990

HORIZONTAL CONTROL ORIGINATED ON 1st ORDER HORIZONTAL CONTROL ORIGINATED ON _____ ORDER
 CONTROL BASED ON FLORIDA HIGH PRECISION GPS NETWORK, CONTROL BY _____
 ON NORTH AMERICAN DATUM OF 1983, 1990 ADJUSTMENT ON _____ DATUM
 COORDINATES (FT), 1st ORDER COORDINATES (FT), _____ ORDER
 NORTHING (Y) 780,632.820 NORTHING (Y) _____
 EASTING (X) 797,721.377 EASTING (X) _____

GRID FLORIDA TRANSVERSE MERCATOR RECOVERED BY _____
 ZONE WEST SCALE FACTOR .999964 DATE, CONDITION _____
 FIELD BOOK _____ PAGE _____



VERTICAL CONTROL ORIGINATED ON 2nd ORDER CONTROL ESTABLISHED BY _____ N. G. S. AND F. D. O. T.
 ON NATIONAL GEODETIC VERTICAL DATUM OF 1929.
 ELEVATION (FT) _____ 3rd ORDER LEVEL BOOK _____ PAGE _____